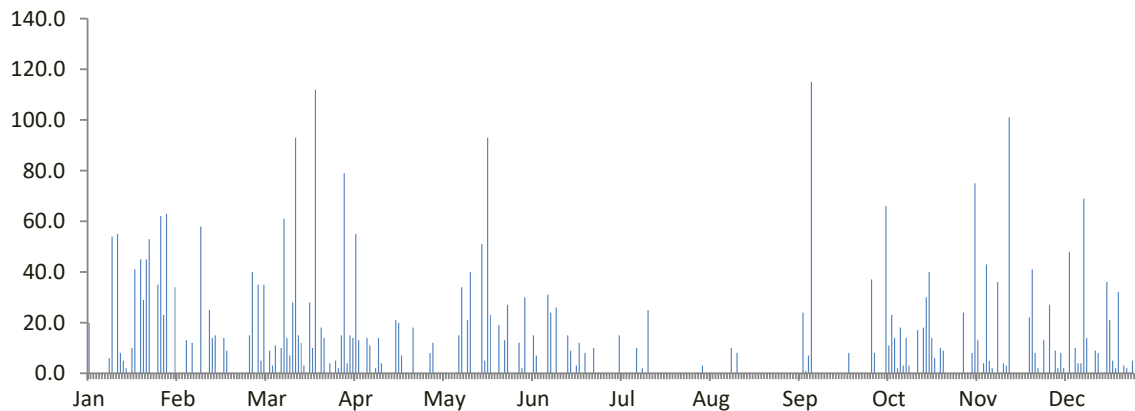


DATA CURAH HUJAN HARIAN

Nama Pos : Plered	Provinsi : Jawa Tengah
Nomor Pos : K 88	Kota/Kabupaten : Magelang
Jenis Alat : Manual	Kecamatan : Secang
Koordinat : 7 25' 54.42" LS-110 13' 57.76" BT	Desa/Kampung : Jambewangi
Elevasi : -	Pengelola : BPSDA Probolo
SWS - DAS : Progo Hulu	Didirikan : Endang Riyanti
Tahun Pendirian : 1998	Tahun : 2022

TANGGAL	BULAN (mm)											
	Jan	Feb	Mar	Apr	Mei	Jun	Jul	Ags	Sep	Okt	Nov	Des
1	20.0	0.0	35.0	4.0	12.0	2.0	0.0	0.0	0.0	37.0	0.0	0.0
2	0.0	0.0	5.0	15.0	0.0	30.0	0.0	0.0	0.0	8.0	24.0	27.0
3	0.0	0.0	35.0	14.0	0.0	0.0	0.0	3.0	0.0	0.0	0.0	0.0
4	0.0	13.0	0.0	55.0	0.0	0.0	0.0	0.0	0.0	0.0	0.0	9.0
5	0.0	0.0	9.0	13.0	0.0	15.0	15.0	0.0	0.0	0.0	8.0	2.0
6	0.0	12.0	3.0	0.0	0.0	7.0	0.0	0.0	0.0	66.0	75.0	8.0
7	0.0	0.0	11.0	0.0	0.0	0.0	0.0	0.0	24.0	11.0	13.0	2.0
8	6.0	0.0	0.0	14.0	0.0	0.0	0.0	0.0	1.0	23.0	0.0	0.0
9	54.0	58.0	10.0	11.0	0.0	0.0	0.0	0.0	7.0	14.0	4.0	48.0
10	0.0	0.0	61.0	0.0	15.0	31.0	0.0	0.0	115.0	2.0	43.0	0.0
11	55.0	0.0	14.0	2.0	34.0	24.0	10.0	0.0	0.0	18.0	5.0	10.0
12	8.0	25.0	7.0	14.0	0.0	0.0	0.0	0.0	0.0	3.0	2.0	4.0
13	5.0	14.0	28.0	4.0	21.0	26.0	2.0	10.0	0.0	14.0	0.0	4.0
14	2.0	15.0	93.0	0.0	40.0	0.0	0.0	0.0	0.0	3.0	36.0	69.0
15	0.0	0.0	15.0	0.0	0.0	0.0	25.0	8.0	0.0	0.0	0.0	14.0
16	10.0	0.0	12.0	0.0	0.0	0.0	0.0	0.0	0.0	0.0	4.0	0.0
17	41.0	14.0	3.0	0.0	0.0	15.0	0.0	0.0	0.0	17.0	3.0	0.0
18	0.0	9.0	0.0	21.0	51.0	9.0	0.0	0.0	0.0	0.0	101.0	9.0
19	45.0	0.0	28.0	20.0	5.0	0.0	0.0	0.0	0.0	18.0	0.0	8.0
20	29.0	0.0	10.0	7.0	93.0	3.0	0.0	0.0	0.0	30.0	0.0	0.0
21	45.0	0.0	112.0	0.0	23.0	12.0	0.0	0.0	0.0	40.0	0.0	0.0
22	53.0	0.0	0.0	0.0	0.0	0.0	0.0	0.0	0.0	14.0	0.0	36.0
23	0.0	0.0	18.0	0.0	0.0	8.0	0.0	0.0	8.0	6.0	0.0	21.0
24	0.0	0.0	14.0	18.0	19.0	0.0	0.0	0.0	0.0	0.0	0.0	5.0
25	35.0	0.0	0.0	0.0	0.0	0.0	0.0	0.0	0.0	10.0	22.0	2.0
26	62.0	15.0	4.0	0.0	13.0	10.0	0.0	0.0	0.0	9.0	41.0	32.0
27	23.0	40.0	0.0	0.0	27.0	0.0	0.0	0.0	0.0	0.0	8.0	0.0
28	63.0	0.0	5.0	0.0	0.0	0.0	0.0	0.0	0.0	0.0	2.0	3.0
29	0.0		2.0	0.0	0.0	0.0	0.0	0.0	0.0	0.0	0.0	2.0
30	0.0		15.0	8.0	0.0	0.0	0.0	0.0	0.0	0.0	13.0	0.0
31	34.0		79.0		12.0		0.0	0.0		0.0		5.0
Hujan Maks	63.0	58.0	112.0	55.0	93.0	31.0	25.0	10.0	115.0	66.0	101.0	69.0
Jml. Curah Hujan	590.0	215.0	628.0	220.0	365.0	192.0	52.0	21.0	155.0	343.0	404.0	320.0
Jml. Hari Hujan	18	10	25	15	13	13	4	3	5	19	17	21
Jml. data (1-15)	15	15	15	15	15	15	15	15	15	15	15	15
Jml. Hujan (1-15)	150.0	137.0	326.0	146.0	122.0	135.0	52.0	21.0	147.0	199.0	210.0	197.0
Jml. Data (16-31)	16	13	16	15	16	15	16	16	15	16	15	16
Jml. Hujan (16-31)	440.0	78.0	302.0	74.0	243.0	57.0	0.0	0.0	8.0	144.0	194.0	123.0
Tahunan	Hujan Maksimum		Jumlah Curah Hujan				Jumlah Hari Hujan			Hujan Ekstrim		
	115.0		3505.0				163			153		

GRAFIK HUJAN (mm)

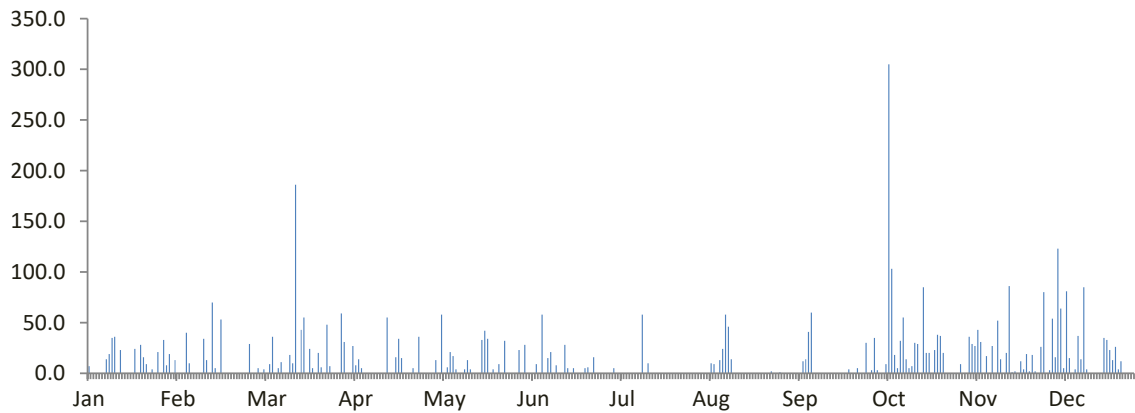


DATA CURAH HUJAN HARIAN

Nama Pos	: Plumbon	Provinsi	: Jawa Tengah
Nomor Pos	: -	Kota/Kabupaten	: Kebumen
Jenis Alat	: Manual	Kecamatan	: Karangasambung
Koordinat	: -' -" LS--' -" BT	Desa/Kampung	: Plumbon
Elevasi	: -	Pengelola	: BPUSDATARU Probolo
SWS - DAS	: -	Didirikan	: -
Tahun Pendirian	: -	Tahun	: 2022

TANGGAL	BULAN (mm)											
	Jan	Feb	Mar	Apr	Mei	Jun	Jul	Ags	Sep	Okt	Nov	Des
1	7.0	0.0	5.0	0.0	0.0	0.0	0.0	0.0	0.0	3.0	9.0	0.0
2	0.0	0.0	0.0	0.0	13.0	28.0	0.0	0.0	0.0	35.0	0.0	3.0
3	0.0	0.0	4.0	27.0	0.0	0.0	5.0	0.0	0.0	3.0	0.0	54.0
4	0.0	40.0	0.0	8.0	58.0	0.0	0.0	0.0	0.0	0.0	36.0	16.0
5	0.0	10.0	9.0	14.0	0.0	0.0	0.0	0.0	0.0	0.0	29.0	123.0
6	0.0	0.0	36.0	5.0	6.0	9.0	0.0	10.0	0.0	9.0	27.0	64.0
7	14.0	0.0	0.0	0.0	21.0	0.0	0.0	9.0	12.0	305.0	43.0	5.0
8	19.0	0.0	5.0	0.0	17.0	58.0	0.0	0.0	14.0	103.0	31.0	81.0
9	35.0	0.0	11.0	0.0	4.0	0.0	0.0	13.0	41.0	18.0	0.0	15.0
10	36.0	34.0	0.0	0.0	0.0	15.0	0.0	24.0	60.0	5.0	17.0	0.0
11	0.0	13.0	0.0	0.0	0.0	21.0	0.0	58.0	0.0	32.0	0.0	4.0
12	23.0	0.0	18.0	0.0	4.0	0.0	0.0	46.0	0.0	55.0	27.0	37.0
13	0.0	70.0	10.0	0.0	13.0	8.0	58.0	14.0	0.0	14.0	0.0	14.0
14	0.0	5.0	186.0	0.0	4.0	0.0	0.0	0.0	0.0	5.0	52.0	85.0
15	0.0	0.0	0.0	55.0	0.0	0.0	10.0	0.0	0.0	7.0	14.0	4.0
16	0.0	53.0	43.0	0.0	0.0	28.0	0.0	0.0	0.0	30.0	0.0	0.0
17	24.0	0.0	55.0	0.0	0.0	5.0	0.0	0.0	0.0	29.0	20.0	0.0
18	0.0	0.0	0.0	16.0	33.0	0.0	0.0	0.0	0.0	0.0	86.0	0.0
19	28.0	0.0	24.0	34.0	42.0	5.0	0.0	0.0	0.0	85.0	1.0	0.0
20	16.0	0.0	5.0	15.0	34.0	0.0	0.0	0.0	0.0	20.0	2.0	0.0
21	9.0	0.0	0.0	0.0	0.0	0.0	0.0	0.0	0.0	20.0	0.0	35.0
22	0.0	0.0	20.0	0.0	4.0	0.0	0.0	0.0	0.0	0.0	12.0	33.0
23	4.0	0.0	6.0	0.0	0.0	5.0	0.0	0.0	4.0	23.0	4.0	23.0
24	0.0	0.0	0.0	5.0	9.0	6.0	0.0	0.0	0.0	38.0	19.0	13.0
25	21.0	0.0	48.0	0.0	0.0	0.0	0.0	0.0	0.0	37.0	2.0	26.0
26	0.0	29.0	7.0	36.0	32.0	16.0	0.0	0.0	5.0	20.0	18.0	4.0
27	33.0	0.0	0.0	0.0	0.0	0.0	0.0	2.0	0.0	0.0	2.0	12.0
28	8.0	0.0	0.0	0.0	0.0	0.0	0.0	0.0	0.0	0.0	0.0	0.0
29	19.0		0.0	0.0	0.0	0.0	0.0	0.0	30.0	0.0	26.0	0.0
30	0.0		59.0	0.0	0.0	0.0	0.0	1.0	0.0	0.0	80.0	0.0
31	13.0		31.0		23.0		0.0	0.0		0.0		0.0
Hujan Maks	36.0	70.0	186.0	55.0	58.0	58.0	58.0	58.0	60.0	305.0	86.0	123.0
Jml. Curah Hujan	309.0	254.0	582.0	215.0	317.0	204.0	73.0	177.0	166.0	896.0	557.0	651.0
Jml. Hari Hujan	16	8	19	10	16	12	3	9	7	22	22	20
Jml. data (1-15)	15	15	15	15	15	15	15	15	15	15	15	15
Jml. Hujan (1-15)	134.0	172.0	284.0	109.0	140.0	139.0	73.0	174.0	127.0	594.0	285.0	505.0
Jml. Data (16-31)	16	13	16	15	16	15	16	16	15	16	15	16
Jml. Hujan (16-31)	175.0	82.0	298.0	106.0	177.0	65.0	0.0	3.0	39.0	302.0	272.0	146.0
Tahunan	Hujan Maksimum			Jumlah Curah Hujan			Jumlah Hari Hujan			Hujan Ekstrim		
	305.0			4401.0			164			305		

GRAFIK HUJAN (mm)

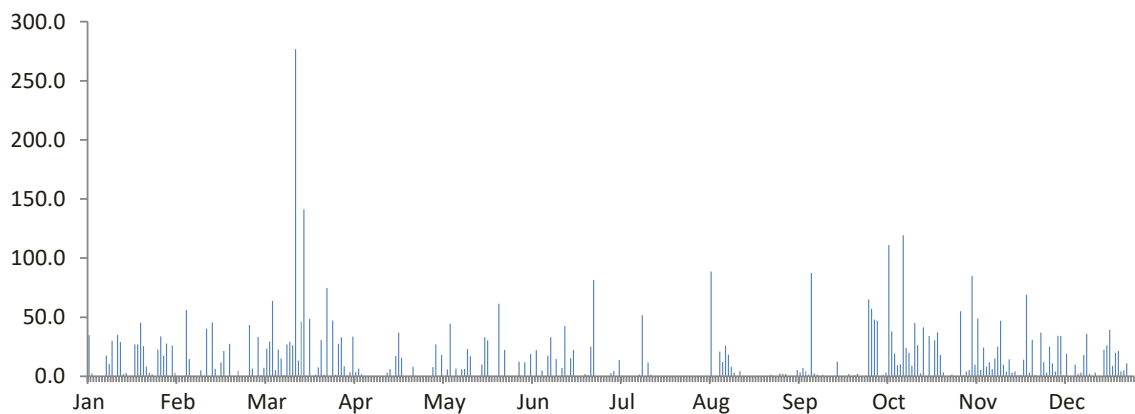


DATA CURAH HUJAN HARIAN

Nama Pos	: Pohkumbang	Provinsi	: Jawa tengah
Nomor Pos	: -	Kota/Kabupaten	: Kebumen
Jenis Alat	: Otomatis	Kecamatan	: Karanganyar
Koordinat	: 7 35' 08.22" LS-109 32' 36.42" BT	Desa/Kampung	: Pohkumbang
Elevasi	: -	Pengelola	: BPSDA Probolo
SWS - DAS	: Telomoyo	Didirikan	: Wahyu Trisnawati
Tahun Pendirian	: 2006	Tahun	: 2022

TANGGAL	BULAN (mm)											
	Jan	Feb	Mar	Apr	Mei	Jun	Jul	Ags	Sep	Okt	Nov	Des
1	34.9	0.0	33.3	0.7	7.8	0.0	0.0	0.0	2.0	57.2	55.0	3.1
2	2.5	0.0	1.0	3.3	26.9	11.8	2.7	0.0	0.0	48.0	1.0	25.0
3	0.0	0.0	7.3	33.6	0.0	0.0	4.7	0.0	0.0	47.0	4.0	11.0
4	0.0	56.1	23.3	3.7	17.9	18.8	0.0	0.0	0.0	0.0	5.4	4.0
5	0.0	14.5	29.4	6.6	0.0	0.0	13.9	0.0	5.4	1.1	85.0	34.3
6	0.0	0.0	63.9	1.7	5.8	22.1	0.0	88.6	3.3	3.1	10.0	34.0
7	17.5	0.0	5.1	0.0	44.5	0.0	0.0	0.0	7.1	111.0	49.0	1.0
8	10.5	0.0	22.5	0.0	0.0	4.9	0.0	0.0	4.3	38.0	5.2	19.0
9	30.0	5.0	15.1	0.0	6.5	0.0	0.0	21.0	1.4	19.2	24.2	0.0
10	0.0	0.0	1.2	0.0	0.0	17.6	0.0	12.1	87.3	9.4	8.2	0.0
11	35.0	40.5	27.0	0.0	6.0	33.0	0.0	26.1	2.4	10.3	12.0	10.0
12	28.9	0.0	29.3	0.0	6.4	0.0	1.3	18.2	1.4	119.2	6.0	2.2
13	2.0	45.6	26.2	0.0	23.0	14.6	51.5	8.1	0.0	24.0	15.0	3.2
14	2.8	6.3	276.6	0.0	16.9	0.0	0.0	3.1	1.1	20.0	25.0	18.0
15	0.0	0.0	13.4	3.0	0.0	7.0	11.6	0.0	0.0	9.0	47.0	36.0
16	0.0	11.6	46.3	6.1	0.0	42.7	1.5	4.4	0.0	45.0	10.0	2.0
17	27.0	21.4	141.3	0.0	0.0	0.7	0.0	0.0	0.0	26.2	4.0	0.0
18	26.9	0.0	0.5	17.3	10.0	15.3	0.0	0.0	0.0	2.4	14.3	3.0
19	45.3	27.6	48.6	37.1	33.1	22.3	0.0	0.0	12.4	41.3	3.0	0.0
20	25.6	0.0	0.0	15.9	30.5	0.0	0.0	0.0	0.0	0.0	4.1	0.0
21	8.3	0.0	1.4	0.0	0.0	0.0	0.0	0.0	0.0	34.0	1.0	22.3
22	2.8	4.7	7.6	0.0	0.0	0.0	0.0	0.0	0.0	0.0	1.2	26.0
23	1.7	0.0	30.6	0.0	0.0	2.0	0.0	0.0	2.0	30.4	14.0	39.1
24	0.0	0.0	1.4	7.9	61.3	1.1	0.0	0.0	0.0	37.2	69.0	9.0
25	22.6	0.0	74.8	0.0	0.0	25.0	0.0	0.0	1.0	18.1	3.0	20.0
26	33.7	43.3	0.0	0.0	22.3	81.3	0.0	0.0	2.1	3.4	31.0	21.4
27	17.4	6.6	47.1	0.0	0.0	0.0	0.0	1.1	0.0	0.0	1.0	4.0
28	27.7	0.0	1.5	0.0	0.0	0.0	0.0	0.0	0.0	0.0	0.0	5.1
29	0.0		27.5	0.0	0.0	0.0	0.0	0.0	0.0	1.4	37.0	11.0
30	26.0		33.0	0.0	0.0	0.0	0.0	2.3	65.0	0.0	12.0	0.0
31	3.0		8.6		12.4		0.0	2.1		0.0		0.0
Hujan Maks	45.3	56.1	276.6	37.1	61.3	81.3	51.5	88.6	87.3	119.2	85.0	39.1
Jml. Curah Hujan	432.1	283.2	1044.8	136.9	331.3	320.2	87.2	187.1	198.2	755.9	556.6	363.7
Jml. Hari Hujan	22	12	29	12	16	16	7	11	15	24	29	24
Jml. data (1-15)	15	15	15	15	15	15	15	15	15	15	15	15
Jml. Hujan (1-15)	164.1	168.0	574.6	52.6	161.7	129.8	85.7	177.2	115.7	516.5	352.0	200.8
Jml. Data (16-31)	16	13	16	15	16	15	16	16	15	16	15	16
Jml. Hujan (16-31)	268.0	115.2	470.2	84.3	169.6	190.4	1.5	9.9	82.5	239.4	204.6	162.9
Tahunan	Hujan Maksimum		Jumlah Curah Hujan			Jumlah Hari Hujan			Hujan Ekstrim			
	276.6		4697.2			217			276.6			

GRAFIK HUJAN (mm)

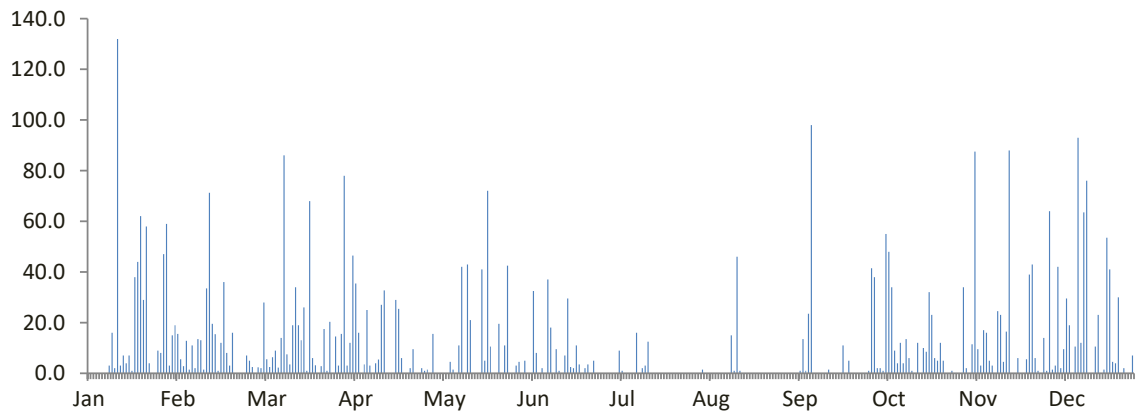


DATA CURAH HUJAN HARIAN

Nama Pos : Poncol Gelangan	Provinsi : Jawa Tengah
Nomor Pos : -	Kota/Kabupaten : Magelang
Jenis Alat : Manual	Kecamatan : Magelang Utara
Koordinat : 7 32' 57" LS-110 6' 10" BT	Desa/Kampung : Gelangan
Elevasi : + 180 m	Pengelola : BPUSDATARU Probolo
SWS - DAS : Progo	Didirikan : Dinas PU Pengairan
Tahun Pendirian : -	Tahun : 2022

TANGGAL	BULAN (mm)											
	Jan	Feb	Mar	Apr	Mei	Jun	Jul	Ags	Sep	Okt	Nov	Des
1	0.0	15.5	2.4	3.0	15.5	0.0	0.0	0.0	0.0	41.5	0.0	1.0
2	0.0	5.6	2.0	12.0	0.0	5.0	0.0	0.0	0.0	38.0	34.0	64.0
3	0.0	2.8	28.0	46.5	0.0	0.0	0.0	1.5	0.0	2.0	2.0	1.5
4	0.0	12.8	5.5	35.5	0.0	0.0	0.0	0.0	0.0	2.0	0.0	3.0
5	0.0	1.5	2.5	16.0	0.0	32.5	9.0	0.0	0.0	1.0	11.5	42.0
6	0.0	11.0	6.3	0.0	0.0	8.0	1.0	0.0	1.0	55.0	87.5	2.0
7	0.0	2.0	9.0	3.5	4.5	0.0	0.0	0.0	13.5	48.0	9.5	9.5
8	3.0	13.5	2.2	25.0	1.5	2.0	0.0	0.0	1.0	34.0	3.0	29.5
9	16.0	13.0	14.0	3.0	0.0	0.0	0.0	0.0	23.5	9.0	17.0	19.0
10	2.0	1.5	86.0	0.0	11.0	37.0	0.0	0.0	98.0	4.0	16.0	0.0
11	132.0	33.5	7.5	4.0	42.0	18.0	16.0	0.0	0.0	12.0	5.0	10.5
12	3.0	71.3	3.5	5.4	0.0	0.0	0.0	0.0	0.0	4.0	3.0	93.0
13	7.0	19.5	19.0	27.0	43.0	9.5	2.0	15.0	0.0	13.5	0.0	12.0
14	4.0	15.4	34.0	32.7	21.0	1.0	3.0	1.0	0.0	6.0	24.5	63.5
15	7.0	1.0	19.0	0.0	0.0	0.0	12.5	46.0	0.0	1.0	23.0	76.0
16	1.0	12.0	13.0	0.0	0.0	7.0	0.0	1.0	1.5	0.0	4.5	0.0
17	38.0	36.0	26.0	0.0	0.0	29.5	0.0	0.0	0.0	12.0	16.5	0.0
18	44.0	8.0	1.0	29.0	41.0	2.5	0.0	0.0	0.0	0.0	88.0	10.5
19	62.0	3.0	68.0	25.5	5.0	2.0	0.0	0.0	0.0	10.0	0.0	23.0
20	29.0	16.0	6.0	6.0	72.0	11.0	0.0	0.0	0.0	8.5	0.0	0.0
21	58.0	0.0	3.2	0.0	10.5	3.5	0.0	0.0	11.0	32.0	6.0	1.5
22	4.0	0.0	0.0	0.0	0.0	0.0	0.0	0.0	0.0	23.0	0.0	53.5
23	0.0	0.0	2.8	2.0	0.0	2.0	0.0	0.0	5.0	6.0	0.0	41.0
24	0.0	0.0	17.5	9.5	19.5	3.5	0.0	0.0	0.0	5.0	5.5	4.5
25	9.0	7.0	1.0	0.0	0.0	0.0	0.0	0.0	0.0	12.0	39.0	4.0
26	8.0	5.0	20.3	0.0	11.0	5.0	0.0	0.0	0.0	5.0	43.0	30.0
27	47.0	2.5	0.0	2.0	42.5	0.0	0.0	0.0	0.0	0.0	6.0	0.0
28	59.0	0.0	14.5	1.0	0.0	0.0	0.0	0.0	0.0	0.0	1.0	2.0
29	3.0		3.0	1.5	0.0	0.0	0.0	0.0	0.0	1.0	0.0	0.0
30	15.0		15.5	0.0	3.0	0.0	0.0	0.0	1.0	0.0	14.0	0.0
31	19.0		78.0		4.5		0.0	0.0		0.0		7.0
Hujan Maks	132.0	71.3	86.0	46.5	72.0	37.0	16.0	46.0	98.0	55.0	88.0	93.0
Jml. Curah Hujan	570.0	309.4	510.7	290.1	347.5	179.0	43.5	64.5	155.5	385.5	459.5	603.5
Jml. Hari Hujan	22	23	29	20	16	17	6	5	9	25	22	24
Jml. data (1-15)	15	15	15	15	15	15	15	15	15	15	15	15
Jml. Hujan (1-15)	174.0	219.9	240.9	213.6	138.5	113.0	43.5	63.5	137.0	271.0	236.0	426.5
Jml. Data (16-31)	16	13	16	15	16	15	16	16	15	16	15	16
Jml. Hujan (16-31)	396.0	89.5	269.8	76.5	209.0	66.0	0.0	1.0	18.5	114.5	223.5	177.0
Tahunan	Hujan Maksimum			Jumlah Curah Hujan			Jumlah Hari Hujan			Hujan Ekstrim		
	132.0			3918.7			218			140		

GRAFIK HUJAN (mm)

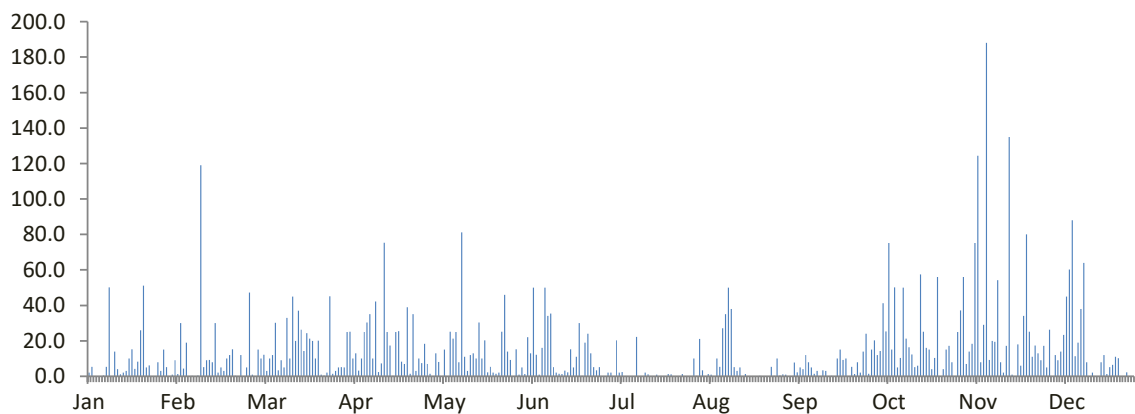


DATA CURAH HUJAN HARIAN

Nama Pos : Ropoh	Provinsi : Jawa Tengah
Nomor Pos : -	Kota/Kabupaten : Wonosobo
Jenis Alat : Manual	Kecamatan : Kepil
Koordinat : 7 27' 25.11" LS-110 2' 36.34" BT	Desa/Kampung : Ropoh
Elevasi : -	Pengelola : BPSDA PROBOLO
SWS - DAS : Bogowonto	Didirikan : Sri
Tahun Pendirian : 2018	Tahun : 2022

TANGGAL	BULAN (mm)											
	Jan	Feb	Mar	Apr	Mei	Jun	Jul	Ags	Sep	Okt	Nov	Des
1	2.0	1.3	15.0	25.0	0.0	5.0	2.0	0.3	1.0	15.0	37.2	5.0
2	5.4	30.0	10.1	25.2	13.0	1.2	2.0	21.1	0.0	20.3	56.0	26.3
3	0.2	4.3	12.2	10.0	8.1	22.0	0.0	3.3	0.0	12.0	7.0	0.0
4	0.0	19.0	3.0	13.0	0.0	13.0	20.2	0.0	7.8	14.2	14.0	12.0
5	0.0	0.0	10.0	3.2	15.0	50.0	2.0	1.2	2.2	41.3	18.4	9.1
6	0.4	0.3	12.0	10.0	0.0	12.2	2.4	1.0	5.0	25.3	75.2	14.0
7	5.4	0.0	30.1	25.0	25.1	1.0	0.0	0.0	4.0	75.2	124.3	23.4
8	50.1	0.4	3.3	30.3	21.2	16.0	0.0	10.0	12.0	15.0	8.0	45.0
9	0.0	119.0	9.0	35.0	25.0	50.0	0.0	5.3	8.0	50.2	29.0	60.2
10	14.0	5.2	5.0	10.0	8.0	34.0	0.0	27.1	5.0	5.0	188.0	88.0
11	4.0	9.0	33.0	42.2	81.2	35.3	22.2	35.1	1.4	10.3	9.3	11.3
12	1.1	9.3	10.0	2.4	11.0	5.1	0.0	50.0	3.0	50.0	20.0	19.0
13	2.0	8.0	45.0	7.2	3.0	2.0	0.0	38.0	0.0	21.2	19.4	38.0
14	3.0	30.0	20.0	75.4	12.0	1.4	2.0	5.2	3.3	16.4	54.2	64.0
15	10.0	2.0	37.0	25.0	13.0	1.3	1.1	3.1	3.0	12.3	8.0	8.0
16	15.3	5.0	26.3	17.3	10.0	3.2	0.0	5.0	0.0	5.1	2.0	0.0
17	4.2	3.0	14.2	0.3	30.4	2.2	0.0	0.0	0.3	6.0	17.2	2.0
18	8.3	10.0	24.3	25.0	10.1	15.3	1.0	1.3	0.0	57.4	135.0	0.0
19	26.0	12.0	21.2	25.4	20.2	5.0	0.0	0.0	10.0	25.2	1.0	0.0
20	51.1	15.2	20.0	8.2	2.2	11.0	0.0	0.0	15.0	16.0	0.0	8.0
21	5.0	0.3	10.0	7.0	5.3	30.0	0.0	0.0	9.3	15.0	18.0	12.0
22	6.2	0.0	20.1	39.0	2.0	0.3	1.3	0.0	10.0	4.0	6.0	1.3
23	0.0	12.0	1.0	1.4	1.5	19.0	1.1	0.3	0.0	10.3	34.0	5.1
24	0.0	0.2	0.4	35.0	2.1	24.0	0.0	0.0	5.3	56.0	80.0	6.4
25	8.0	5.0	2.1	3.0	25.2	13.0	0.0	0.0	1.3	0.0	25.2	11.0
26	3.1	47.2	45.1	10.0	46.0	5.2	0.0	0.0	8.0	4.0	11.0	10.2
27	15.0	1.0	1.4	7.4	14.0	3.4	1.2	5.4	2.0	15.0	17.4	0.0
28	5.1	0.0	3.0	18.3	9.3	5.2	0.0	0.3	14.0	17.2	13.0	0.0
29	0.0		5.0	7.0	0.0	0.0	0.0	10.0	24.0	8.0	9.0	2.3
30	1.0		5.1	1.4	15.3	0.0	0.0	0.4	1.4	0.0	17.2	0.0
31	9.0		5.0		1.0		10.0	1.1		25.0		0.0
Hujan Maks	51.1	119.0	45.1	75.4	81.2	50.0	22.2	50.0	24.0	75.2	188.0	88.0
Jml. Curah Hujan	254.9	348.7	458.9	544.6	430.2	386.3	68.5	224.5	156.3	647.9	1054.0	481.6
Jml. Hari Hujan	25	24	31	30	27	28	13	21	24	29	29	23
Jml. data (1-15)	15	15	15	15	15	15	15	15	15	15	15	15
Jml. Hujan (1-15)	97.6	237.8	254.7	338.9	235.6	249.5	53.9	200.7	55.7	383.7	668.0	423.3
Jml. Data (16-31)	16	13	16	15	16	15	16	16	15	16	15	16
Jml. Hujan (16-31)	157.3	110.9	204.2	205.7	194.6	136.8	14.6	23.8	100.6	264.2	386.0	58.3
Tahunan	Hujan Maksimum		Jumlah Curah Hujan				Jumlah Hari Hujan			Hujan Ekstrim		
	188.0		5056.4				304			188		

GRAFIK HUJAN (mm)

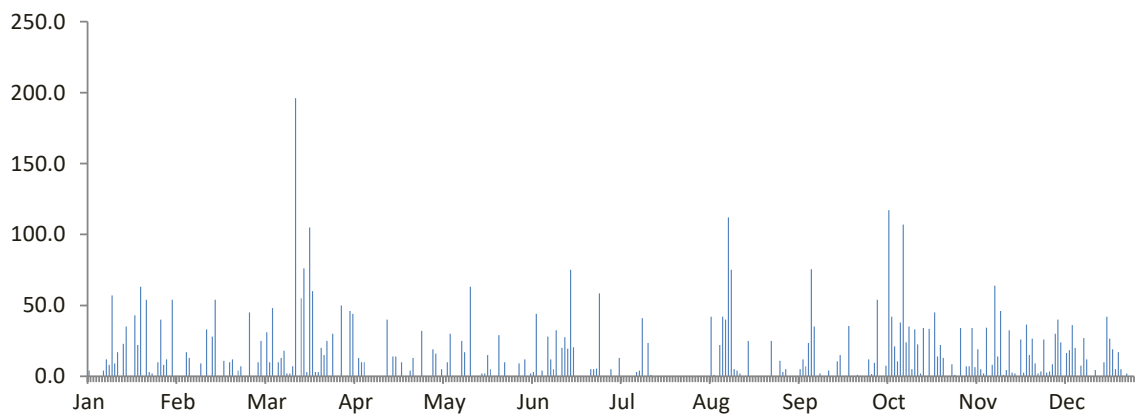


DATA CURAH HUJAN HARIAN

Nama Pos : Sampang	Provinsi : Jawa tengah
Nomor Pos : K 2 c	Kota/Kabupaten : Kebumen
Jenis Alat : Manual dan Otomatis	Kecamatan : Sempor
Koordinat : 7 34' 7" LS-109 28' 9" BT	Desa/Kampung : Sampang
Elevasi : + 82 m	Pengelola : BPUSDATARU Probolo
SWS - DAS : Telemoyo	Didirikan : Dinas PU Pengairan
Tahun Pendirian : -	Tahun : 2022

TANGGAL	BULAN (mm)											
	Jan	Feb	Mar	Apr	Mei	Jun	Jul	Ags	Sep	Okt	Nov	Des
1	4.0	0.0	10.0	0.0	19.0	0.0	0.0	0.0	5.0	1.5	34.0	2.5
2	0.0	0.0	25.0	46.0	16.0	12.0	5.0	0.0	0.0	9.5	0.0	3.5
3	0.0	0.0	0.0	44.0	0.0	0.0	0.0	0.0	0.0	54.0	7.0	8.5
4	0.0	17.0	31.0	0.0	5.0	2.0	0.0	0.0	0.0	0.0	7.0	30.0
5	0.0	13.0	10.0	13.0	0.0	3.0	13.0	0.0	0.0	0.0	34.0	40.0
6	4.0	0.0	48.0	10.0	10.0	44.0	0.0	42.0	5.0	7.5	6.5	24.0
7	12.0	0.0	0.0	10.0	30.0	0.0	0.0	1.0	12.0	117.0	19.0	0.0
8	8.0	0.0	10.0	0.0	0.0	4.0	0.0	0.0	7.0	42.0	5.0	16.5
9	57.0	9.0	13.0	0.0	0.0	0.0	0.0	22.0	23.5	21.0	2.0	18.5
10	9.0	0.0	18.0	0.0	0.0	28.0	0.0	42.0	75.5	10.5	34.2	36.0
11	17.0	33.0	2.0	0.0	25.0	12.0	3.0	40.0	35.0	38.0	0.0	20.0
12	0.0	0.0	2.0	0.0	17.0	5.0	4.0	112.0	0.0	107.0	8.0	0.0
13	23.0	28.0	7.0	0.0	0.0	32.5	41.0	75.0	2.0	24.0	64.0	7.5
14	35.0	54.0	196.0	0.0	63.0	0.0	0.0	5.0	0.0	35.0	14.0	27.0
15	0.0	0.0	0.0	40.0	0.0	20.0	23.5	4.0	0.0	5.0	46.0	12.0
16	0.0	0.0	55.0	0.0	0.0	27.5	1.0	2.0	4.0	33.0	1.0	0.0
17	43.0	11.0	76.0	14.0	0.0	19.5	0.0	0.0	0.0	22.5	4.5	0.0
18	22.0	0.0	3.0	14.0	2.0	75.0	0.0	0.0	0.0	2.0	32.5	4.5
19	63.0	10.0	105.0	0.0	2.0	20.5	0.0	25.0	10.5	34.0	2.5	0.0
20	0.0	12.0	60.0	10.0	15.0	0.0	0.0	0.0	15.0	0.0	2.0	0.0
21	54.0	0.0	3.0	0.0	5.0	0.0	0.0	0.0	0.0	33.5	0.0	10.0
22	3.0	4.0	3.0	0.0	0.0	0.0	0.0	0.0	0.0	0.0	26.0	42.0
23	2.0	7.0	20.0	4.0	0.0	0.0	0.0	0.0	35.5	45.0	2.5	26.5
24	0.0	0.0	15.0	13.0	29.0	0.0	0.0	0.0	0.0	14.0	36.5	19.0
25	10.0	0.0	25.0	0.0	0.0	5.0	0.0	0.0	0.0	22.0	15.0	5.0
26	40.0	45.0	0.0	0.0	10.0	5.0	0.0	0.0	1.0	13.0	26.5	17.0
27	8.0	0.0	30.0	32.0	0.0	5.5	0.0	25.0	0.0	0.0	9.0	5.0
28	12.0	0.0	0.0	0.0	0.0	58.5	0.0	0.0	0.0	0.0	2.0	0.0
29	0.0		0.0	0.0	0.0	0.0	0.0	0.0	0.0	8.5	3.5	2.0
30	54.0		50.0	0.0	0.0	0.0	0.0	11.0	12.0	1.0	26.0	0.0
31	0.0		0.0		9.0		0.0	3.0		0.0		0.0
Hujan Maks	63.0	54.0	196.0	46.0	63.0	75.0	41.0	112.0	75.5	117.0	64.0	42.0
Jml. Curah Hujan	480.0	243.0	817.0	250.0	257.0	379.0	90.5	409.0	243.0	700.5	470.2	377.0
Jml. Hari Hujan	20	12	24	12	15	18	7	14	14	24	27	22
Jml. data (1-15)	15	15	15	15	15	15	15	15	15	15	15	15
Jml. Hujan (1-15)	169.0	154.0	372.0	163.0	185.0	162.5	89.5	343.0	165.0	472.0	280.7	246.0
Jml. Data (16-31)	16	13	16	15	16	15	16	16	15	16	15	16
Jml. Hujan (16-31)	311.0	89.0	445.0	87.0	72.0	216.5	1.0	66.0	78.0	228.5	189.5	131.0
Tahunan	Hujan Maksimum		Jumlah Curah Hujan				Jumlah Hari Hujan			Hujan Ekstrim		
	196.0		4716.2				209			264		

GRAFIK HUJAN (mm)

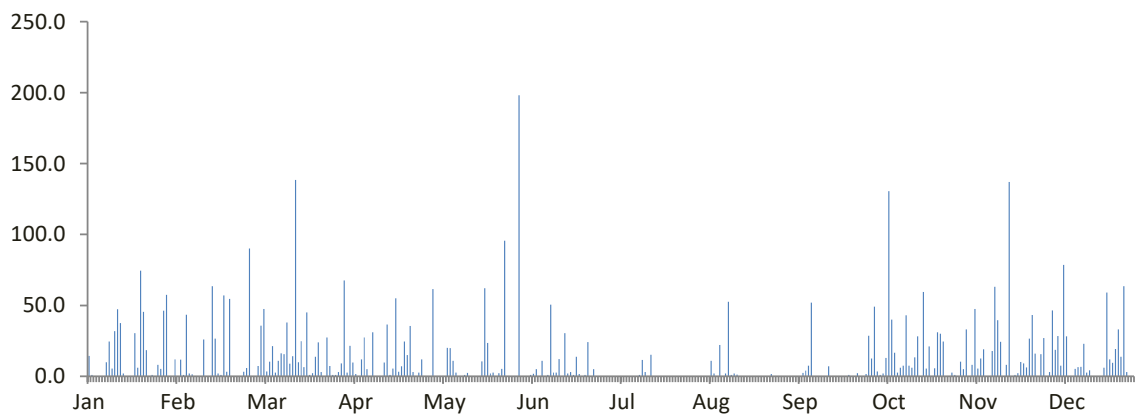


DATA CURAH HUJAN HARIAN

Nama Pos : Sawangan	Provinsi : Jawa tengah
Nomor Pos : K 44	Kota/Kabupaten : Purworejo
Jenis Alat : Manual	Kecamatan : Bruno
Koordinat : 7 36' 20" LS-109 57' 37.4" BT	Desa/Kampung : Sawangan
Elevasi : + 60 m	Pengelola : BPUSDATARU Probolo
SWS - DAS : Cokroyasan	Didirikan : Dinas PU Pengairan
Tahun Pendirian : -	Tahun : 2022

TANGGAL	BULAN (mm)											
	Jan	Feb	Mar	Apr	Mei	Jun	Jul	Ags	Sep	Okt	Nov	Des
1	14.3	0.0	7.3	2.5	61.5	0.0	0.0	0.0	0.0	12.5	10.4	0.0
2	1.0	11.7	35.7	21.5	0.0	0.0	0.0	0.0	0.0	49.0	5.0	3.0
3	0.0	1.0	47.5	9.7	0.0	0.0	0.0	0.0	0.0	3.5	33.0	46.5
4	0.0	43.5	3.5	1.5	0.0	1.0	0.0	0.0	0.0	1.0	0.0	18.7
5	0.0	2.0	10.3	0.0	0.0	1.8	0.0	0.0	0.0	2.0	8.0	28.3
6	0.0	1.3	21.3	12.0	20.0	5.0	0.0	11.0	0.0	13.0	47.5	7.5
7	10.0	0.0	2.5	27.3	19.8	0.0	0.0	2.0	2.3	130.5	5.5	78.5
8	24.5	0.0	11.0	5.0	11.0	11.0	0.0	0.0	4.0	40.0	12.5	28.2
9	5.4	0.0	16.3	0.0	2.5	0.0	0.0	22.0	7.5	16.7	19.0	0.0
10	31.9	26.0	15.5	31.0	0.0	1.0	0.0	0.0	52.0	2.5	0.0	0.0
11	47.2	0.0	38.0	0.0	0.0	50.5	0.0	2.0	0.0	6.0	0.0	5.2
12	37.5	0.0	8.8	0.0	1.0	2.5	1.0	52.5	0.0	7.5	17.8	6.5
13	2.0	63.5	14.2	0.0	2.3	2.6	11.5	1.0	0.0	43.0	63.0	6.7
14	0.0	26.5	138.5	9.8	0.0	12.2	3.0	2.0	0.0	7.5	39.5	23.0
15	0.0	2.0	10.0	36.5	0.0	0.0	0.0	1.2	0.0	6.0	24.3	2.5
16	0.0	1.0	24.7	1.0	0.0	30.4	15.2	0.0	7.0	13.3	0.0	4.2
17	30.5	57.0	6.5	5.5	0.0	2.0	0.0	0.0	0.0	28.2	8.0	0.0
18	6.0	3.2	45.0	55.0	10.5	3.0	0.0	0.0	0.0	0.0	137.0	0.0
19	74.5	54.5	1.0	3.2	62.0	1.0	0.0	0.0	0.0	59.5	0.0	0.0
20	45.5	0.0	2.2	7.0	23.5	13.8	0.0	0.0	0.0	5.5	1.0	0.0
21	18.5	0.0	13.7	24.5	2.0	1.5	0.0	0.0	0.0	21.0	2.2	6.0
22	0.0	0.0	24.0	15.0	2.5	0.0	0.0	0.0	0.0	0.0	10.2	59.0
23	1.0	0.0	3.0	35.5	0.0	1.0	0.0	0.0	1.0	5.7	9.0	12.0
24	0.0	3.3	0.0	3.0	2.2	24.2	0.0	0.0	0.0	31.0	6.3	9.5
25	8.0	5.8	27.3	0.0	5.2	0.0	0.0	0.0	0.0	30.0	26.5	19.2
26	5.2	90.0	7.3	2.5	95.5	5.0	0.0	0.0	2.2	24.5	43.2	33.0
27	46.3	0.0	1.0	12.0	0.0	0.0	0.0	1.5	0.0	0.0	16.0	13.7
28	57.5	0.0	1.0	0.0	0.0	0.0	0.0	0.0	0.0	0.0	0.0	63.5
29	0.0		3.0	0.0	0.0	0.0	0.0	0.0	1.5	2.5	15.5	3.0
30	0.0		9.0	0.0	0.0	0.0	0.0	0.0	28.5	1.0	27.0	0.0
31	12.0		67.5		198.0		0.0	0.0		0.0		0.0
Hujan Maks	74.5	90.0	138.5	55.0	198.0	50.5	15.2	52.5	52.0	130.5	137.0	78.5
Jml. Curah Hujan	478.8	392.3	616.6	321.0	519.5	169.5	30.7	95.2	106.0	562.9	587.4	477.7
Jml. Hari Hujan	20	16	30	21	16	18	4	9	9	26	24	22
Jml. data (1-15)	15	15	15	15	15	15	15	15	15	15	15	15
Jml. Hujan (1-15)	173.8	177.5	380.4	156.8	118.1	87.6	15.5	93.7	65.8	340.7	285.5	254.6
Jml. Data (16-31)	16	13	16	15	16	15	16	16	15	16	15	16
Jml. Hujan (16-31)	305.0	214.8	236.2	164.2	401.4	81.9	15.2	1.5	40.2	222.2	301.9	223.1
Tahunan	Hujan Maksimum			Jumlah Curah Hujan			Jumlah Hari Hujan			Hujan Ekstrim		
	198.0			4357.6			215			300		

GRAFIK HUJAN (mm)

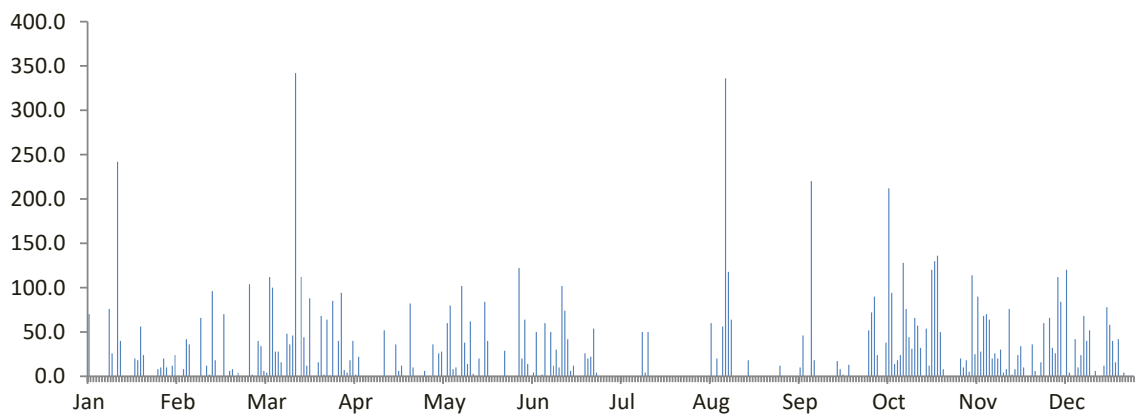


DATA CURAH HUJAN HARIAN

Nama Pos : Somagede	Provinsi : Jawa tengah
Nomor Pos : K 2 a	Kota/Kabupaten : Kebumen
Jenis Alat : Manual	Kecamatan : Sempor
Koordinat : 7 32' 38" LS-109 19' 28" BT	Desa/Kampung : Somagede
Elevasi : + 100 m	Pengelola : BPUSDATARU Probolo
SWS - DAS : Telomoyo	Didirikan : Dinas PU Pengairan
Tahun Pendirian : -	Tahun : 2022

TANGGAL	BULAN (mm)											
	Jan	Feb	Mar	Apr	Mei	Jun	Jul	Ags	Sep	Okt	Nov	Des
1	70.0	0.0	40.0	4.0	36.0	20.0	0.0	0.0	0.0	72.0	20.0	0.0
2	0.0	0.0	34.0	18.0	0.0	64.0	0.0	0.0	0.0	90.0	10.0	66.0
3	0.0	8.0	6.0	40.0	26.0	14.0	0.0	0.0	0.0	24.0	18.0	32.0
4	0.0	42.0	4.0	2.0	28.0	0.0	0.0	0.0	0.0	0.0	5.0	26.0
5	0.0	36.0	112.0	22.0	0.0	4.0	0.0	0.0	0.0	0.0	114.0	112.0
6	0.0	0.0	100.0	0.0	60.0	50.0	0.0	60.0	10.0	38.0	25.0	84.0
7	0.0	0.0	28.0	0.0	80.0	0.0	0.0	0.0	46.0	212.0	90.0	1.0
8	76.0	0.0	28.0	0.0	8.0	2.0	0.0	20.0	0.0	94.0	28.0	120.0
9	26.0	66.0	16.0	0.0	10.0	60.0	0.0	0.0	0.0	14.0	68.0	4.0
10	0.0	0.0	0.0	0.0	0.0	0.0	0.0	56.0	220.0	18.0	70.0	0.0
11	242.0	12.0	48.0	0.0	102.0	50.0	0.0	336.0	18.0	24.0	64.0	42.0
12	40.0	2.0	36.0	0.0	38.0	12.0	0.0	118.0	0.0	128.0	20.0	10.0
13	0.0	96.0	46.0	0.0	14.0	30.0	50.0	64.0	0.0	76.0	26.0	24.0
14	0.0	18.0	342.0	52.0	62.0	10.0	4.0	0.0	0.0	44.0	20.0	68.0
15	0.0	0.0	0.0	0.0	3.0	102.0	50.0	0.0	0.0	31.0	30.0	40.0
16	0.0	0.0	112.0	0.0	0.0	74.0	0.0	0.0	0.0	66.0	4.0	52.0
17	20.0	70.0	44.0	0.0	20.0	42.0	0.0	0.0	0.0	57.0	8.0	0.0
18	18.0	0.0	12.0	36.0	0.0	6.0	0.0	0.0	0.0	32.0	76.0	6.0
19	56.0	6.0	88.0	6.0	84.0	12.0	0.0	18.0	17.0	0.0	2.0	0.0
20	24.0	8.0	0.0	12.0	40.0	0.0	0.0	0.0	8.0	54.0	8.0	0.0
21	0.0	0.0	0.0	0.0	0.0	0.0	0.0	0.0	2.0	12.0	24.0	12.0
22	0.0	4.0	16.0	0.0	0.0	0.0	0.0	0.0	0.0	120.0	34.0	78.0
23	0.0	0.0	68.0	82.0	0.0	26.0	0.0	0.0	13.0	130.0	10.0	58.0
24	0.0	0.0	2.0	10.0	0.0	20.0	0.0	0.0	0.0	136.0	0.0	40.0
25	8.0	0.0	64.0	0.0	0.0	22.0	0.0	0.0	0.0	50.0	0.0	16.0
26	10.0	104.0	1.0	0.0	29.0	54.0	0.0	0.0	0.0	8.0	36.0	42.0
27	20.0	2.0	85.0	0.0	0.0	4.0	0.0	0.0	0.0	0.0	6.0	0.0
28	10.0	0.0	0.0	6.0	0.0	0.0	0.0	0.0	0.0	0.0	0.0	4.0
29	0.0		40.0	0.0	0.0	0.0	0.0	0.0	0.0	0.0	16.0	0.0
30	12.0		94.0	0.0	0.0	0.0	0.0	12.0	52.0	0.0	60.0	0.0
31	24.0		7.0		122.0		0.0	0.0		0.0		0.0
Hujan Maks	242.0	104.0	342.0	82.0	122.0	102.0	50.0	336.0	220.0	212.0	114.0	120.0
Jml. Curah Hujan	656.0	474.0	1473.0	290.0	762.0	678.0	104.0	684.0	386.0	1530.0	892.0	937.0
Jml. Hari Hujan	15	14	26	12	17	21	3	8	9	23	27	22
Jml. data (1-15)	15	15	15	15	15	15	15	15	15	15	15	15
Jml. Hujan (1-15)	454.0	280.0	840.0	138.0	467.0	418.0	104.0	654.0	294.0	865.0	608.0	629.0
Jml. Data (16-31)	16	13	16	15	16	15	16	16	15	16	15	16
Jml. Hujan (16-31)	202.0	194.0	633.0	152.0	295.0	260.0	0.0	30.0	92.0	665.0	284.0	308.0
Tahunan	Hujan Maksimum		Jumlah Curah Hujan			Jumlah Hari Hujan			Hujan Ekstrim			
	342.0		8866.0			197			350			

GRAFIK HUJAN (mm)

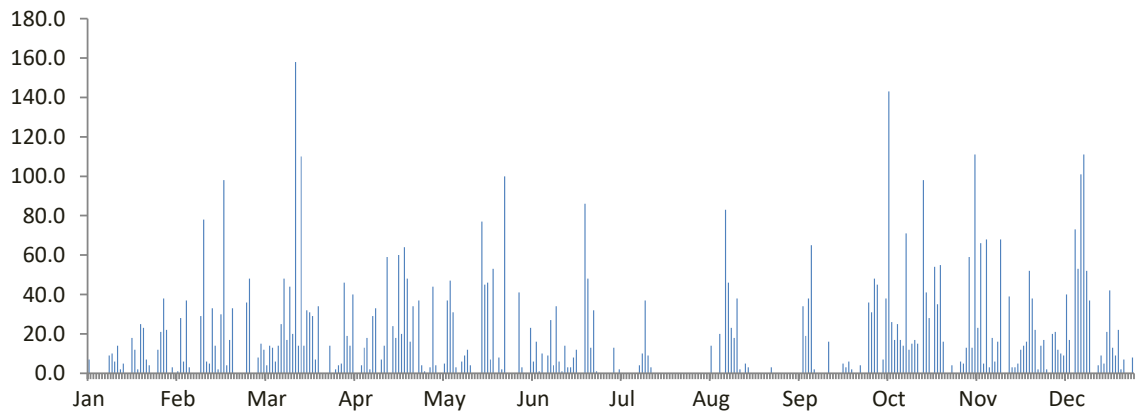


DATA CURAH HUJAN HARIAN

Nama Pos : Watujagir	Provinsi : Jawa tengah
Nomor Pos : K 42 a	Kota/Kabupaten : Purworejo
Jenis Alat : Manual	Kecamatan : Sapuran
Koordinat : 7 40' 24" LS-109 52' 44" BT	Desa/Kampung : Watujagir
Elevasi : + 331 m	Pengelola : BPUSDATARU Probolo
SWS - DAS : Cokroyasan	Didirikan : Dinas PU Pengairan
Tahun Pendirian : -	Tahun : 2022

TANGGAL	BULAN (mm)											
	Jan	Feb	Mar	Apr	Mei	Jun	Jul	Ags	Sep	Okt	Nov	Des
1	7.0	1.0	8.0	19.0	44.0	3.0	0.0	0.0	0.0	31.0	6.0	2.0
2	0.0	28.0	15.0	14.0	4.0	0.0	0.0	0.0	0.0	48.0	5.0	0.0
3	0.0	6.0	12.0	40.0	0.0	0.0	13.0	0.0	0.0	45.0	13.0	20.0
4	0.0	37.0	4.0	0.0	0.0	23.0	0.0	0.0	0.0	0.0	59.0	21.0
5	0.0	3.0	14.0	0.0	5.0	6.0	2.0	0.0	0.0	7.0	13.0	12.0
6	0.0	0.0	13.0	4.0	37.0	16.0	0.0	14.0	0.0	38.0	111.0	10.0
7	0.0	0.0	6.0	13.0	47.0	1.0	0.0	0.0	34.0	143.0	23.0	9.0
8	9.0	0.0	14.0	18.0	31.0	10.0	0.0	0.0	19.0	26.0	66.0	40.0
9	10.0	29.0	25.0	2.0	3.0	0.0	0.0	20.0	38.0	17.0	5.0	17.0
10	6.0	78.0	48.0	29.0	0.0	9.0	0.0	0.0	65.0	25.0	68.0	0.0
11	14.0	6.0	17.0	33.0	6.0	27.0	0.0	83.0	2.0	17.0	3.0	73.0
12	2.0	5.0	44.0	0.0	9.0	4.0	4.0	46.0	0.0	14.0	18.0	53.0
13	5.0	33.0	20.0	7.0	12.0	34.0	10.0	23.0	0.0	71.0	6.0	101.0
14	0.0	14.0	158.0	14.0	4.0	6.0	37.0	18.0	0.0	12.0	16.0	111.0
15	0.0	2.0	14.0	59.0	0.0	1.0	9.0	38.0	0.0	15.0	68.0	52.0
16	18.0	30.0	110.0	0.0	0.0	14.0	3.0	2.0	16.0	17.0	0.0	37.0
17	12.0	98.0	14.0	24.0	0.0	3.0	0.0	0.0	0.0	15.0	0.0	0.0
18	2.0	4.0	32.0	18.0	77.0	3.0	0.0	5.0	0.0	0.0	39.0	0.0
19	25.0	17.0	31.0	60.0	45.0	8.0	0.0	3.0	0.0	98.0	3.0	4.0
20	23.0	33.0	29.0	20.0	46.0	12.0	0.0	0.0	0.0	41.0	3.0	9.0
21	7.0	0.0	7.0	64.0	7.0	0.0	0.0	0.0	5.0	28.0	5.0	5.0
22	4.0	0.0	34.0	48.0	53.0	0.0	0.0	0.0	3.0	0.0	12.0	21.0
23	0.0	0.0	0.0	16.0	0.0	86.0	0.0	0.0	6.0	54.0	14.0	42.0
24	0.0	0.0	0.0	34.0	8.0	48.0	0.0	0.0	2.0	35.0	16.0	13.0
25	12.0	36.0	0.0	0.0	2.0	13.0	0.0	0.0	0.0	55.0	52.0	9.0
26	21.0	48.0	14.0	37.0	100.0	32.0	0.0	0.0	0.0	16.0	38.0	22.0
27	38.0	0.0	0.0	4.0	0.0	1.0	0.0	3.0	4.0	0.0	22.0	2.0
28	22.0	0.0	2.0	1.0	0.0	0.0	0.0	0.0	0.0	0.0	2.0	7.0
29	0.0		4.0	0.0	0.0	0.0	0.0	0.0	0.0	4.0	14.0	0.0
30	3.0		5.0	3.0	0.0	0.0	0.0	0.0	36.0	0.0	17.0	0.0
31	0.0		46.0		41.0		0.0	0.0		0.0		8.0
Hujan Maks	38.0	98.0	158.0	64.0	100.0	86.0	37.0	83.0	65.0	143.0	111.0	111.0
Jml. Curah Hujan	240.0	508.0	740.0	581.0	581.0	360.0	78.0	255.0	230.0	872.0	717.0	700.0
Jml. Hari Hujan	19	19	27	24	20	22	7	11	12	24	28	25
Jml. data (1-15)	15	15	15	15	15	15	15	15	15	15	15	15
Jml. Hujan (1-15)	53.0	242.0	412.0	252.0	202.0	140.0	75.0	242.0	158.0	509.0	480.0	521.0
Jml. Data (16-31)	16	13	16	15	16	15	16	16	15	16	15	16
Jml. Hujan (16-31)	187.0	266.0	328.0	329.0	379.0	220.0	3.0	13.0	72.0	363.0	237.0	179.0
Tahunan	Hujan Maksimum			Jumlah Curah Hujan			Jumlah Hari Hujan			Hujan Ekstrim		
	158.0			5862.0			238			200		

GRAFIK HUJAN (mm)

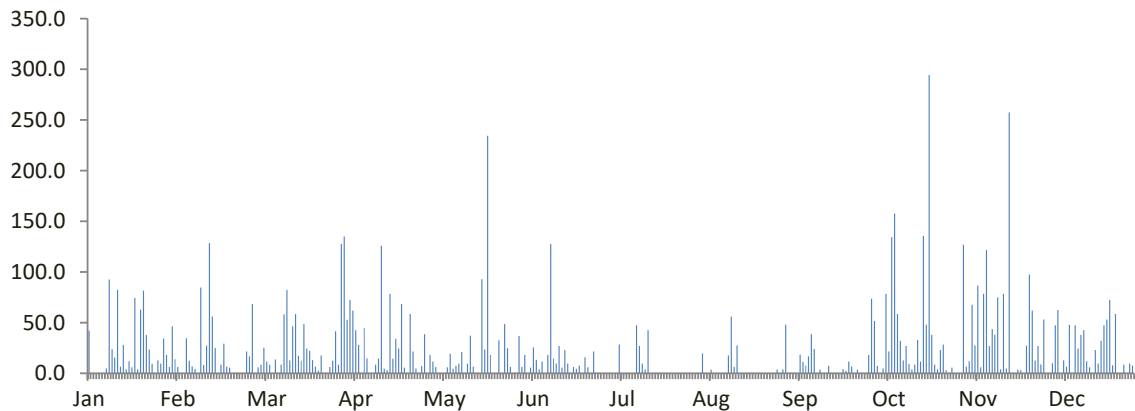


DATA CURAH HUJAN HARIAN

Nama Pos	: Badran (Otm)	Provinsi	: Jawa Tengah
Nomor Pos	: K.87	Kota/Kabupaten	: Temanggung
Jenis Alat	: Otomatis	Kecamatan	: Kranggan
Koordinat	: 7 22' 01.0884" LS-110 12' 39.1212" B	Desa/Kampung	: Badran
Elevasi	: -	Pengelola	: BPSDA Probolo
SWS - DAS	: Progo Hulu	Didirikan	: Sodik
Tahun Pendirian	: 1988	Tahun	: 2022

TANGGAL	BULAN (mm)											
	Jan	Feb	Mar	Apr	Mei	Jun	Jul	Ags	Sep	Okt	Nov	Des
1	42.0	6.3	5.8	52.8	11.5	6.2	0.0	0.0	48.0	73.5	0.0	0.0
2	0.0	0.0	8.5	72.5	6.2	18.0	0.0	0.0	0.0	51.8	127.0	0.0
3	0.0	0.0	25.3	61.8	0.0	0.0	0.0	19.5	0.0	7.2	6.5	9.8
4	0.0	34.7	11.5	42.5	0.0	5.7	0.0	0.0	0.0	0.0	12.0	47.3
5	0.0	12.5	8.5	28.0	0.0	25.5	28.5	0.0	0.0	4.7	67.5	62.5
6	0.0	6.8	0.0	0.0	5.8	13.4	0.0	3.5	18.5	78.5	27.5	0.0
7	4.8	4.2	13.5	44.5	19.4	3.8	0.0	0.0	11.3	21.5	86.5	12.8
8	92.5	0.0	0.0	14.8	4.5	11.5	0.0	0.0	7.5	134.5	6.0	6.5
9	23.8	84.5	8.5	0.0	7.2	0.0	0.0	0.0	16.8	157.8	78.5	47.8
10	15.5	8.2	58.3	0.0	9.5	18.0	0.0	0.0	38.5	58.5	121.5	0.0
11	82.4	27.3	82.5	8.5	21.0	127.5	47.5	0.0	24.0	32.0	27.0	47.3
12	6.5	128.5	12.8	14.3	0.0	14.8	27.0	17.5	0.0	12.8	43.8	24.5
13	28.2	55.8	46.2	125.8	9.5	9.5	9.5	55.8	3.5	27.0	38.0	37.8
14	3.8	25.0	58.5	4.5	37.2	27.0	3.8	6.2	0.0	9.0	75.0	42.5
15	12.0	0.0	17.3	3.0	6.5	5.5	42.5	27.5	0.0	4.0	4.0	11.8
16	5.8	8.5	12.5	78.5	0.0	23.0	0.0	0.0	7.3	8.5	78.4	6.0
17	74.5	29.2	48.5	14.5	0.0	9.5	0.0	0.0	0.0	32.8	4.8	0.0
18	4.0	6.5	24.5	34.0	92.8	0.0	0.0	0.0	0.0	11.5	257.5	23.0
19	62.8	5.5	22.0	24.3	23.5	6.2	0.0	0.0	0.0	135.5	0.0	9.5
20	81.5	0.0	13.0	68.3	234.5	4.5	0.0	0.0	0.0	48.0	0.0	32.0
21	37.8	0.0	6.5	5.5	18.2	7.5	0.0	0.0	4.2	294.5	3.7	47.5
22	23.5	0.0	2.7	0.0	0.0	0.0	0.0	0.0	2.5	38.0	3.2	53.0
23	9.3	0.0	17.5	58.5	0.0	15.8	0.0	0.0	11.5	8.5	0.0	72.5
24	0.0	0.0	0.0	21.5	32.5	6.0	0.0	0.0	6.8	3.8	27.3	7.8
25	12.8	21.5	0.0	4.8	0.0	0.0	0.0	0.0	0.0	23.0	97.5	58.5
26	9.5	16.8	6.3	0.0	48.5	21.5	0.0	0.0	3.5	28.5	62.0	0.0
27	34.2	68.5	12.5	7.2	24.8	0.0	0.0	0.0	0.0	3.0	12.5	0.0
28	18.0	0.0	41.5	38.5	6.2	0.0	0.0	0.0	0.0	0.0	27.0	8.5
29	6.3		8.5	0.0	0.0	0.0	0.0	3.7	0.0	5.5	8.8	0.0
30	46.2		127.5	18.0	0.0	0.0	0.0	0.0	18.0	0.0	53.0	9.5
31	14.0		135.0		37.0		0.0	4.0		0.0		7.5
Hujan Maks	92.5	128.5	135.0	125.8	234.5	127.5	47.5	55.8	48.0	294.5	257.5	72.5
Jml. Curah Hujan	751.7	550.3	835.7	846.6	656.3	380.4	158.8	137.7	221.9	1313.9	1356.5	685.9
Jml. Hari Hujan	25	18	27	24	20	21	6	8	15	27	26	23
Jml. data (1-15)	15	15	15	15	15	15	15	15	15	15	15	15
Jml. Hujan (1-15)	311.5	393.8	357.2	473.0	138.3	286.4	158.8	130.0	168.1	672.8	720.8	350.6
Jml. Data (16-31)	16	13	16	15	16	15	16	16	15	16	15	16
Jml. Hujan (16-31)	440.2	156.5	478.5	373.6	518.0	94.0	0.0	7.7	53.8	641.1	635.7	335.3
Tahunan	Hujan Maksimum			Jumlah Curah Hujan			Jumlah Hari Hujan			Hujan Ekstrim		
	294.5			7895.7			240			294.5		

GRAFIK HUJAN (mm)

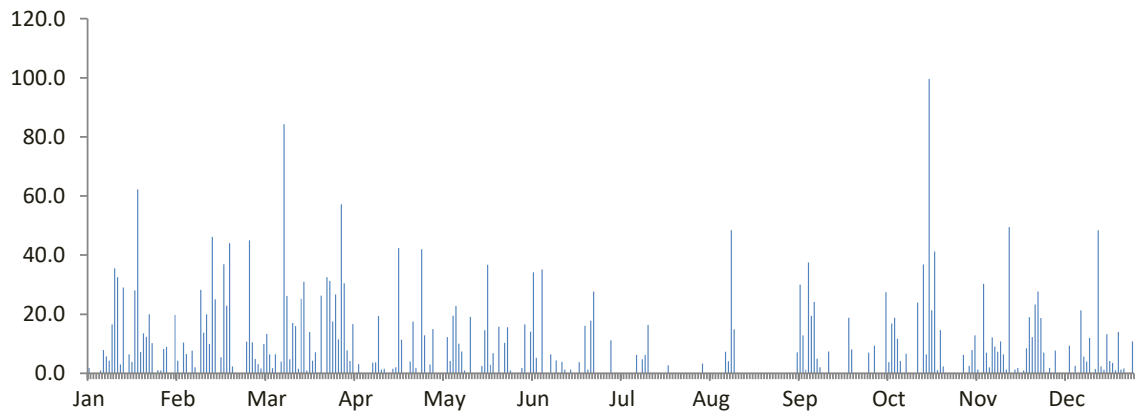


DATA CURAH HUJAN HARIAN

Nama Pos : Caturanom (Otm)	Provinsi : Jawa Tengah
Nomor Pos : -	Kota/Kabupaten : Temanggung
Jenis Alat : Otomatis	Kecamatan : Parakan
Koordinat : 7 17' 40.85" LS-110 04' 48.71" BT	Desa/Kampung : Caturanom
Elevasi : -	Pengelola : BPSDA Probolo
SWS - DAS : Progo	Didirikan : Arif Ikhwani
Tahun Pendirian : 2004	Tahun : 2022

TANGGAL	BULAN (mm)											
	Jan	Feb	Mar	Apr	Mei	Jun	Jul	Ags	Sep	Okt	Nov	Des
1	1.8	4.3	3.1	7.8	15.0	1.8	0.0	0.0	0.0	0.0	0.0	0.0
2	0.0	0.0	1.6	4.2	0.0	16.5	11.2	0.0	0.0	9.3	6.2	1.8
3	0.0	10.4	9.9	16.6	0.0	0.0	0.0	3.3	0.0	0.0	0.0	0.0
4	0.0	6.5	13.3	0.0	0.0	14.1	0.0	0.0	0.0	0.0	2.5	7.7
5	1.0	0.0	6.4	3.1	0.0	34.2	0.0	0.0	7.1	0.0	7.9	0.0
6	7.9	7.7	1.7	0.0	12.3	5.2	0.0	0.0	30.0	27.5	12.8	0.0
7	5.7	2.0	6.4	0.0	4.2	0.0	0.0	0.0	12.8	3.8	1.2	0.0
8	4.3	0.0	0.0	0.0	19.5	35.2	0.0	0.0	1.2	16.8	0.0	0.0
9	16.5	28.2	4.0	0.0	22.8	0.0	0.0	0.0	37.5	18.8	30.3	9.3
10	35.5	13.7	84.3	3.6	10.0	0.0	0.0	0.0	19.5	11.7	7.0	0.0
11	32.5	20.0	26.2	3.7	7.4	6.4	6.2	7.3	24.1	4.2	2.0	2.5
12	3.0	9.9	4.8	19.4	1.0	0.0	0.0	4.1	5.0	0.0	12.2	0.0
13	29.0	46.2	17.0	1.2	0.0	4.4	4.8	48.4	2.0	6.6	9.0	21.3
14	0.0	25.0	16.0	1.5	19.1	0.0	6.2	14.9	0.0	0.0	7.3	5.6
15	6.4	0.0	1.5	0.0	0.0	3.9	16.4	0.0	0.0	0.0	10.8	4.0
16	3.9	5.4	25.2	0.0	0.0	1.2	0.0	0.0	7.4	0.0	6.4	12.0
17	28.0	36.9	31.0	1.5	0.0	0.0	0.0	0.0	0.0	24.0	1.2	0.0
18	62.2	22.9	1.0	2.0	2.5	1.2	0.0	0.0	0.0	0.0	49.5	1.4
19	7.2	44.0	14.0	42.4	14.6	0.0	0.0	0.0	0.0	36.8	0.0	48.4
20	13.5	2.3	4.3	11.4	36.7	0.0	0.0	0.0	0.0	6.4	1.2	2.3
21	12.4	0.0	7.1	0.0	2.9	3.8	0.0	0.0	0.0	99.6	1.8	1.2
22	20.0	0.0	0.0	0.0	6.8	0.0	2.7	0.0	0.0	21.3	0.0	13.2
23	10.2	0.0	26.3	4.0	0.0	16.1	0.0	0.0	18.8	41.2	1.0	4.2
24	0.0	0.0	0.0	17.5	15.8	1.2	0.0	0.0	8.1	1.1	8.5	3.5
25	1.1	10.7	32.5	1.8	0.0	17.8	0.0	0.0	0.0	14.6	19.0	1.1
26	1.0	45.0	31.3	0.0	10.3	27.7	0.0	0.0	0.0	2.3	12.3	14.0
27	8.3	10.5	17.5	42.0	15.6	0.0	0.0	0.0	0.0	0.0	23.3	1.2
28	8.9	4.9	26.7	12.8	1.0	0.0	0.0	0.0	0.0	0.0	27.7	1.6
29	0.0		11.5	0.0	0.0	0.0	0.0	0.0	0.0	0.0	18.7	0.0
30	0.0		57.2	3.0	0.0	0.0	0.0	0.0	7.0	0.0	7.0	0.0
31	19.8		30.5		0.0		0.0	0.0		0.0		10.8
Hujan Maks	62.2	46.2	84.3	42.4	36.7	35.2	16.4	48.4	37.5	99.6	49.5	48.4
Jml. Curah Hujan	340.1	356.5	512.3	199.5	217.5	190.7	47.5	78.0	180.5	346.0	286.8	167.1
Jml. Hari Hujan	24	20	28	19	18	16	6	5	13	17	25	20
Jml. data (1-15)	15	15	15	15	15	15	15	15	15	15	15	15
Jml. Hujan (1-15)	143.6	173.9	196.2	61.1	111.3	121.7	44.8	78.0	139.2	98.7	109.2	52.2
Jml. Data (16-31)	16	13	16	15	16	15	16	16	15	16	15	16
Jml. Hujan (16-31)	196.5	182.6	316.1	138.4	106.2	69.0	2.7	0.0	41.3	247.3	177.6	114.9
Tahunan	Hujan Maksimum			Jumlah Curah Hujan			Jumlah Hari Hujan			Hujan Ekstrim		
	99.6			2922.5			211			300		

GRAFIK HUJAN (mm)

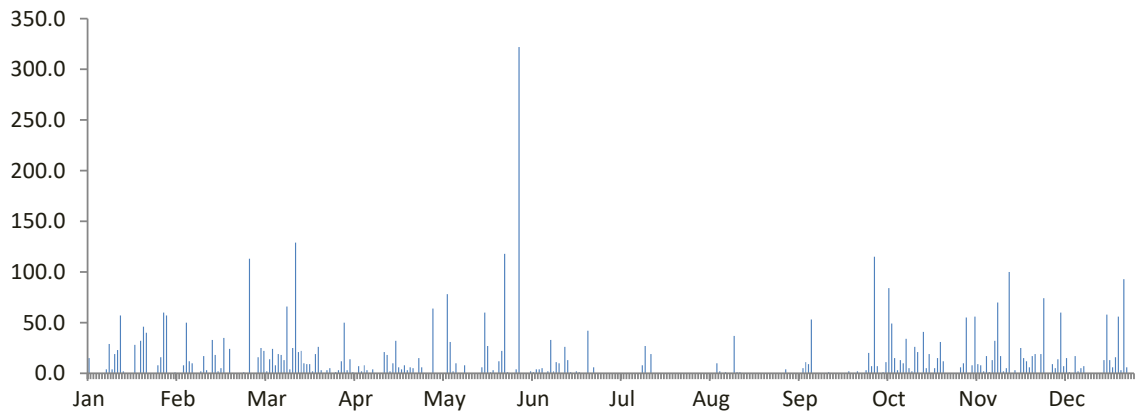


DATA CURAH HUJAN HARIAN

Nama Pos : Gebang	Provinsi : Jawa Tengah
Nomor Pos : -	Kota/Kabupaten : Purworejo
Jenis Alat : Otomatis	Kecamatan : Gebang
Koordinat : 7 39' 12.85" LS-109 59' 31.85" BT	Desa/Kampung : Bendosari
Elevasi : -	Pengelola : BPSDAProbolo
SWS - DAS : Cokroyasan	Didirikan : Rabdi
Tahun Pendirian : 2010	Tahun : 2022

TANGGAL	BULAN (mm)											
	Jan	Feb	Mar	Apr	Mei	Jun	Jul	Ags	Sep	Okt	Nov	Des
1	15.0	0.0	16.0	3.0	64.0	0.0	0.0	0.0	4.0	7.0	6.0	0.0
2	0.0	0.0	25.0	14.0	0.0	0.0	0.0	0.0	0.0	115.0	10.0	0.0
3	0.0	8.0	22.0	1.0	0.0	0.0	0.0	0.0	0.0	7.0	55.0	9.0
4	0.0	50.0	2.0	0.0	0.0	2.0	0.0	0.0	0.0	0.0	0.0	5.0
5	0.0	12.0	14.0	7.0	0.0	1.0	0.0	0.0	0.0	1.0	8.0	14.0
6	0.0	10.0	24.0	2.0	78.0	4.0	0.0	0.0	0.0	11.0	56.0	60.0
7	4.0	0.0	8.0	8.0	31.0	4.0	0.0	0.0	5.0	84.0	9.0	7.0
8	29.0	0.0	19.0	3.0	2.0	5.0	0.0	10.0	11.0	49.0	8.0	15.0
9	4.0	2.0	18.0	0.0	10.0	0.0	0.0	2.0	9.0	15.0	2.0	1.0
10	19.0	17.0	13.0	4.0	0.0	2.0	0.0	0.0	53.0	3.0	17.0	0.0
11	23.0	3.0	66.0	0.0	0.0	33.0	0.0	1.0	0.0	13.0	1.0	17.0
12	57.0	0.0	4.0	0.0	8.0	2.0	0.0	0.0	0.0	10.0	13.0	2.0
13	2.0	33.0	25.0	0.0	0.0	11.0	8.0	0.0	0.0	34.0	32.0	5.0
14	0.0	18.0	129.0	21.0	0.0	10.0	27.0	37.0	0.0	5.0	70.0	7.0
15	0.0	2.0	21.0	18.0	0.0	0.0	0.0	1.0	0.0	2.0	17.0	0.0
16	0.0	5.0	22.0	2.0	0.0	26.0	19.0	1.0	1.0	26.0	2.0	0.0
17	28.0	35.0	10.0	10.0	0.0	13.0	0.0	0.0	0.0	21.0	5.0	0.0
18	0.0	0.0	9.0	32.0	6.0	1.0	0.0	0.0	0.0	0.0	100.0	0.0
19	32.0	24.0	9.0	6.0	60.0	0.0	0.0	0.0	0.0	41.0	0.0	0.0
20	46.0	0.0	2.0	4.0	27.0	2.0	0.0	0.0	0.0	5.0	3.0	0.0
21	40.0	0.0	19.0	8.0	1.0	1.0	0.0	0.0	0.0	19.0	0.0	13.0
22	0.0	0.0	26.0	3.0	3.0	0.0	0.0	0.0	0.0	0.0	25.0	58.0
23	0.0	0.0	3.0	6.0	0.0	0.0	0.0	0.0	2.0	5.0	15.0	13.0
24	0.0	1.0	0.0	5.0	12.0	42.0	0.0	0.0	0.0	15.0	12.0	6.0
25	8.0	0.0	3.0	0.0	22.0	0.0	0.0	0.0	0.0	31.0	6.0	16.0
26	16.0	113.0	5.0	15.0	118.0	6.0	0.0	0.0	2.0	12.0	17.0	56.0
27	60.0	0.0	0.0	6.0	1.0	0.0	0.0	0.0	0.0	0.0	19.0	3.0
28	57.0	0.0	1.0	0.0	0.0	0.0	0.0	0.0	0.0	0.0	0.0	93.0
29	0.0		3.0	0.0	0.0	0.0	0.0	0.0	3.0	0.0	19.0	6.0
30	0.0		12.0	0.0	4.0	0.0	0.0	0.0	20.0	0.0	74.0	0.0
31	1.0		50.0		322.0		0.0	0.0		0.0		0.0
Hujan Maks	60.0	113.0	129.0	32.0	322.0	42.0	27.0	37.0	53.0	115.0	100.0	93.0
Jml. Curah Hujan	441.0	333.0	580.0	178.0	769.0	165.0	54.0	52.0	110.0	531.0	601.0	406.0
Jml. Hari Hujan	17	15	29	21	17	17	3	6	10	23	26	20
Jml. data (1-15)	15	15	15	15	15	15	15	15	15	15	15	15
Jml. Hujan (1-15)	153.0	155.0	406.0	81.0	193.0	74.0	35.0	51.0	82.0	356.0	304.0	142.0
Jml. Data (16-31)	16	13	16	15	16	15	16	16	15	16	15	16
Jml. Hujan (16-31)	288.0	178.0	174.0	97.0	576.0	91.0	19.0	1.0	28.0	175.0	297.0	264.0
Tahunan	Hujan Maksimum			Jumlah Curah Hujan			Jumlah Hari Hujan			Hujan Ekstrim		
	322.0			4220.0			204			322		

GRAFIK HUJAN (mm)

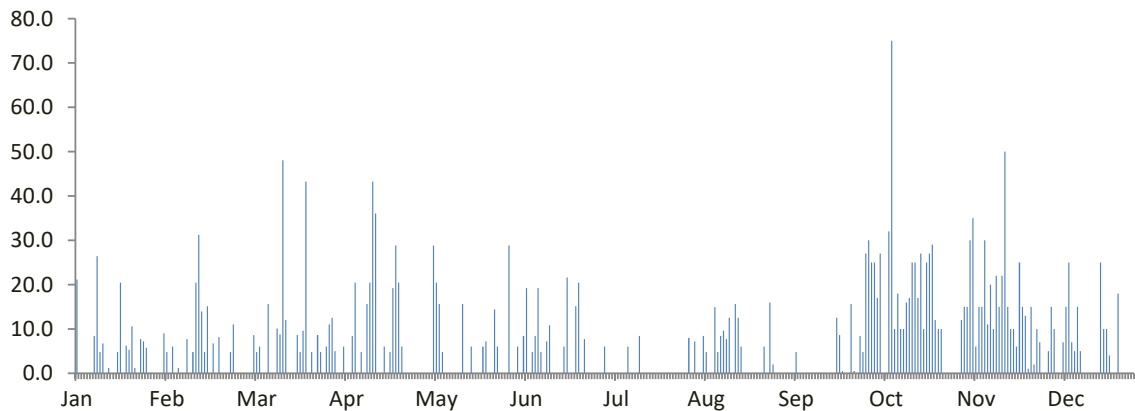


DATA CURAH HUJAN HARIAN

Nama Pos : Kagungan	Provinsi : Jawa Tengah
Nomor Pos : -	Kota/Kabupaten : Wonosobo
Jenis Alat : Manual	Kecamatan : Kepil
Koordinat : 7 30' 01.11" LS-110 1' 39.42" BT	Desa/Kampung : Kagungan
Elevasi : -	Pengelola : BPSDA PROBOLO
SWS - DAS : Bogowonto	Didirikan : Intan
Tahun Pendirian : 2018	Tahun : 2022

TANGGAL	BULAN (mm)											
	Jan	Feb	Mar	Apr	Mei	Jun	Jul	Ags	Sep	Okt	Nov	Des
1	21.2	4.8	0.0	0.0	0.0	0.0	0.0	0.0	0.0	30.0	0.0	0.0
2	0.0	0.0	0.0	0.0	0.0	6.0	6.0	7.2	0.0	25.0	12.0	5.0
3	0.0	6.0	8.7	6.0	0.0	0.0	0.0	0.0	0.0	25.0	15.0	15.0
4	0.0	0.0	4.8	0.0	28.8	8.4	0.0	0.0	0.0	17.0	15.0	10.0
5	0.0	1.2	6.0	0.0	20.4	19.2	0.0	8.4	0.0	27.0	30.0	0.0
6	0.0	0.0	0.0	8.4	15.6	0.0	0.0	4.8	4.8	0.0	35.0	0.0
7	8.4	0.0	0.0	20.4	4.8	4.8	0.0	0.0	0.0	0.0	6.0	7.0
8	26.4	7.7	15.6	0.0	0.0	8.4	0.0	0.0	0.0	32.0	15.0	15.0
9	4.8	0.0	0.0	4.8	0.0	19.2	0.0	14.9	0.0	75.0	15.0	25.0
10	6.7	4.8	0.0	0.0	0.0	4.8	6.0	4.8	0.0	10.0	30.0	7.0
11	0.0	20.4	10.1	15.6	0.0	0.0	0.0	8.4	0.0	18.0	11.0	5.0
12	1.2	31.3	8.8	20.4	0.0	7.2	0.0	9.6	0.0	10.0	20.0	15.0
13	0.0	13.9	48.1	43.3	0.0	10.8	0.0	7.7	0.0	10.0	10.0	5.0
14	0.0	4.8	12.0	36.1	15.6	0.0	8.4	12.5	0.0	16.0	22.0	0.0
15	4.8	15.1	0.0	0.0	0.0	0.0	0.0	0.0	0.0	17.0	15.0	0.0
16	20.4	0.0	0.0	0.0	0.0	0.0	0.0	15.6	0.0	25.0	22.0	0.0
17	0.0	6.7	0.0	6.0	6.0	0.0	0.0	12.5	0.0	25.0	50.0	0.0
18	6.3	0.0	8.7	0.0	0.0	6.0	0.0	6.0	0.0	17.0	15.0	0.0
19	5.3	8.2	4.8	4.8	0.0	21.6	0.0	0.0	0.0	27.0	10.0	0.0
20	10.6	0.0	9.6	19.2	0.0	0.0	0.0	0.0	12.5	10.0	10.0	25.0
21	1.2	0.0	43.3	28.8	6.0	0.0	0.0	0.0	8.7	25.0	6.0	10.0
22	0.0	0.0	0.0	20.4	7.2	15.1	0.0	0.0	0.5	27.0	25.0	10.0
23	7.7	4.8	4.8	6.0	0.0	20.4	0.0	0.0	0.0	29.0	15.0	4.0
24	7.2	11.1	0.0	0.0	0.0	0.0	0.0	0.0	0.0	12.0	13.0	0.0
25	5.8	0.0	8.7	0.0	14.4	7.7	0.0	0.0	15.6	10.0	1.0	0.0
26	0.0	0.0	4.8	0.0	6.0	0.0	0.0	6.0	0.5	10.0	15.0	18.0
27	0.0	0.0	0.0	0.0	0.0	0.0	0.0	0.0	0.0	0.0	2.0	0.0
28	0.0	0.0	6.0	0.0	0.0	0.0	0.0	16.0	8.4	0.0	10.0	0.0
29	0.0		11.1	0.0	0.0	0.0	0.0	2.0	4.8	0.0	7.0	0.0
30	0.0		12.5	0.0	28.8	0.0	0.0	0.0	27.0	0.0	0.0	0.0
31	9.0		5.0		0.0		8.0	0.0		0.0		0.0
Hujan Maks	26.4	31.3	48.1	43.3	28.8	21.6	8.4	16.0	27.0	75.0	50.0	25.0
Jml. Curah Hujan	147.0	140.9	233.3	240.4	153.9	159.9	28.4	136.5	82.8	529.0	452.0	176.0
Jml. Hari Hujan	16	14	19	14	11	14	4	15	9	24	28	15
Jml. data (1-15)	15	15	15	15	15	15	15	15	15	15	15	15
Jml. Hujan (1-15)	73.6	110.1	114.1	155.1	85.3	89.0	20.4	78.4	4.8	312.0	251.0	109.0
Jml. Data (16-31)	16	13	16	15	16	15	16	16	15	16	15	16
Jml. Hujan (16-31)	73.4	30.8	119.2	85.3	68.5	70.9	8.0	58.1	78.0	217.0	201.0	67.0
Tahunan	Hujan Maksimum			Jumlah Curah Hujan			Jumlah Hari Hujan			Hujan Ekstrim		
	75.0			2480.1			183			75		

GRAFIK HUJAN (mm)

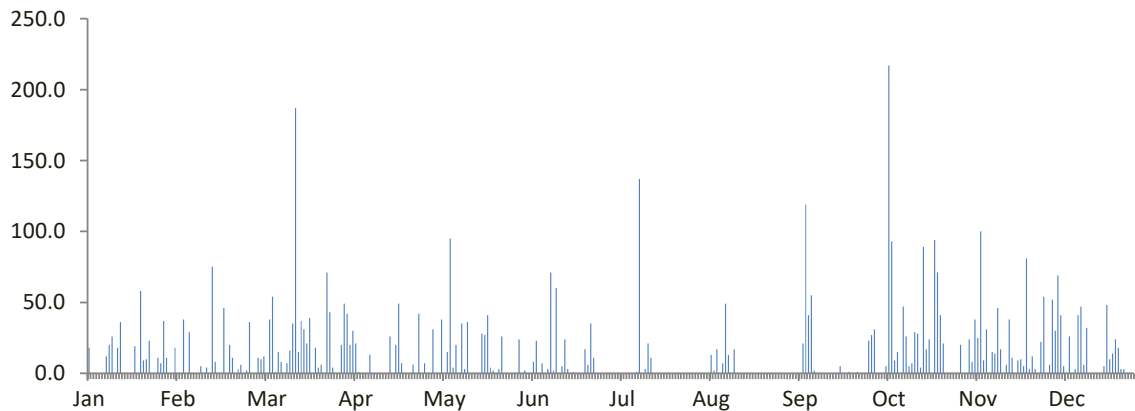


DATA CURAH HUJAN HARIAN

Nama Pos : Karangsambung	Provinsi : Jawa tengah
Nomor Pos : K 8 a	Kota/Kabupaten : Kebumen
Jenis Alat : Manual dan Otomatis	Kecamatan : Karangsambung
Koordinat : 7 32' 34.18" LS-109 40' 17.85" BT	Desa/Kampung : Karangsambung
Elevasi : + 60 m	Pengelola : BPSDA Probolo
SWS - DAS : Luk Ulo	Didirikan : Sairul Bilal P
Tahun Pendirian : 1990	Tahun : 2022

TANGGAL	BULAN (mm)											
	Jan	Feb	Mar	Apr	Mei	Jun	Jul	Ags	Sep	Okt	Nov	Des
1	18.0	0.0	11.0	42.0	31.0	0.0	0.0	0.0	0.0	27.0	20.0	0.0
2	0.0	0.0	10.0	20.0	0.0	2.0	0.0	0.0	0.0	31.0	0.0	6.0
3	0.0	38.0	12.0	30.0	0.0	0.0	0.0	0.0	0.0	0.0	0.0	52.0
4	0.0	0.0	0.0	21.0	38.0	0.0	0.0	0.0	0.0	0.0	24.0	30.0
5	0.0	29.0	38.0	1.0	0.0	8.0	0.0	0.0	0.0	0.0	8.0	69.0
6	0.0	0.0	54.0	0.0	15.0	23.0	0.0	13.0	0.0	5.0	38.0	41.0
7	12.0	0.0	1.0	0.0	95.0	0.0	0.0	2.0	21.0	217.0	25.0	5.0
8	20.0	0.0	15.0	0.0	4.0	7.0	0.0	17.0	119.0	93.0	100.0	0.0
9	26.0	5.0	8.0	13.0	20.0	0.0	0.0	0.0	41.0	9.0	9.0	26.0
10	0.0	0.0	0.0	0.0	0.0	3.0	0.0	7.0	55.0	15.0	31.0	0.0
11	18.0	4.0	7.0	0.0	35.0	71.0	1.0	49.0	2.0	0.0	0.0	3.0
12	36.0	0.0	16.0	0.0	3.0	2.0	137.0	13.0	0.0	47.0	15.0	41.0
13	0.0	75.0	35.0	0.0	36.0	60.0	0.0	0.0	0.0	26.0	14.0	47.0
14	0.0	8.0	187.0	0.0	0.0	0.0	3.0	17.0	0.0	5.0	46.0	6.0
15	0.0	0.0	15.0	0.0	0.0	5.0	21.0	0.0	0.0	7.0	17.0	32.0
16	0.0	0.0	37.0	26.0	0.0	24.0	11.0	0.0	0.0	29.0	0.0	0.0
17	19.0	46.0	31.0	0.0	0.0	3.0	0.0	0.0	0.0	28.0	6.0	0.0
18	0.0	0.0	21.0	20.0	28.0	0.0	0.0	0.0	0.0	4.0	38.0	0.0
19	58.0	20.0	39.0	49.0	27.0	1.0	0.0	0.0	0.0	89.0	11.0	0.0
20	9.0	11.0	0.0	7.0	41.0	0.0	0.0	0.0	5.0	17.0	0.0	0.0
21	10.0	0.0	18.0	0.0	4.0	0.0	0.0	0.0	0.0	24.0	9.0	5.0
22	23.0	3.0	4.0	0.0	2.0	0.0	0.0	0.0	0.0	0.0	10.0	48.0
23	0.0	6.0	6.0	0.0	0.0	17.0	0.0	0.0	1.0	94.0	5.0	10.0
24	0.0	0.0	0.0	6.0	3.0	6.0	0.0	0.0	0.0	71.0	81.0	14.0
25	11.0	2.0	71.0	0.0	26.0	35.0	0.0	0.0	0.0	41.0	3.0	24.0
26	7.0	36.0	43.0	42.0	0.0	11.0	0.0	0.0	1.0	21.0	12.0	18.0
27	37.0	0.0	4.0	0.0	0.0	0.0	0.0	0.0	0.0	0.0	3.0	3.0
28	11.0	0.0	0.0	7.0	0.0	0.0	0.0	0.0	0.0	0.0	0.0	3.0
29	0.0		0.0	0.0	0.0	0.0	0.0	0.0	0.0	0.0	22.0	0.0
30	0.0		20.0	0.0	0.0	0.0	0.0	0.0	23.0	0.0	54.0	0.0
31	18.0		49.0		24.0		0.0	0.0		0.0		0.0
Hujan Maks	58.0	75.0	187.0	49.0	95.0	71.0	137.0	49.0	119.0	217.0	100.0	69.0
Jml. Curah Hujan	333.0	283.0	752.0	284.0	432.0	278.0	173.0	118.0	268.0	900.0	601.0	483.0
Jml. Hari Hujan	16	13	25	13	17	16	5	7	9	21	24	20
Jml. data (1-15)	15	15	15	15	15	15	15	15	15	15	15	15
Jml. Hujan (1-15)	130.0	159.0	409.0	127.0	277.0	181.0	162.0	118.0	238.0	482.0	347.0	358.0
Jml. Data (16-31)	16	13	16	15	16	15	16	16	15	16	15	16
Jml. Hujan (16-31)	203.0	124.0	343.0	157.0	155.0	97.0	11.0	0.0	30.0	418.0	254.0	125.0
Tahunan	Hujan Maksimum			Jumlah Curah Hujan			Jumlah Hari Hujan			Hujan Ekstrim		
	217.0			4905.0			186			240		

GRAFIK HUJAN (mm)

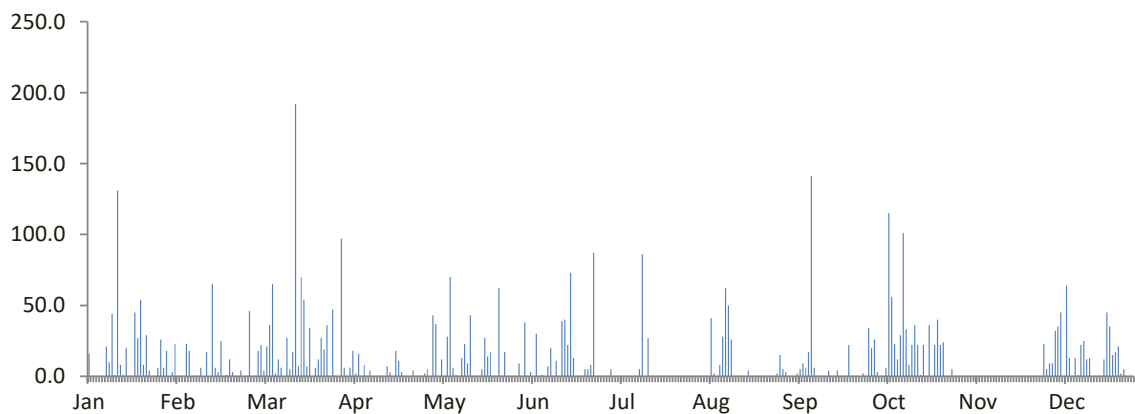


DATA CURAH HUJAN HARIAN

Nama Pos : Kedung Wringin	Provinsi : Jawa tengah
Nomor Pos : K 2	Kota/Kabupaten : Kebumen
Jenis Alat : Manual	Kecamatan : Sempor
Koordinat : 7 33' 2" LS-109 30' 38" BT	Desa/Kampung : Kd. Wringin
Elevasi : + 66 m	Pengelola : BPSDA Probolo
SWS - DAS : Telomoyo	Didirikan : Siswanto
Tahun Pendirian : 1999	Tahun : 2022

TANGGAL	BULAN (mm)											
	Jan	Feb	Mar	Apr	Mei	Jun	Jul	Ags	Sep	Okt	Nov	Des
1	16.0	0.0	18.0	0.0	43.0	0.0	0.0	0.0	3.0	20.0	0.0	5.0
2	0.0	0.0	22.0	6.0	37.0	38.0	5.0	0.0	0.0	26.0	0.0	9.0
3	0.0	0.0	4.0	18.0	0.0	0.0	0.0	0.0	0.0	3.0	0.0	9.0
4	0.0	23.0	21.0	2.0	12.0	3.0	0.0	0.0	0.0	0.0	0.0	32.0
5	0.0	18.0	36.0	16.0	0.0	0.0	0.0	0.0	2.0	0.0	0.0	35.0
6	0.0	0.0	65.0	0.0	28.0	30.0	0.0	41.0	5.0	6.0	0.0	45.0
7	21.0	0.0	2.0	8.0	70.0	0.0	0.0	2.0	9.0	115.0	0.0	0.0
8	10.0	0.0	12.0	0.0	6.0	1.0	0.0	0.0	6.0	56.0	0.0	64.0
9	44.0	6.0	6.0	4.0	1.0	0.0	0.0	8.0	17.0	23.0	0.0	13.0
10	1.0	0.0	0.0	0.0	0.0	7.0	0.0	28.0	141.0	12.0	0.0	0.0
11	131.0	17.0	27.0	0.0	13.0	20.0	0.0	62.0	6.0	29.0	0.0	13.0
12	8.0	0.0	5.0	0.0	23.0	0.0	5.0	50.0	0.0	101.0	0.0	1.0
13	1.0	65.0	17.0	0.0	9.0	11.0	86.0	26.0	0.0	33.0	0.0	22.0
14	20.0	6.0	192.0	0.0	43.0	0.0	0.0	0.0	0.0	8.0	0.0	25.0
15	0.0	3.0	7.0	7.0	0.0	39.0	27.0	0.0	0.0	22.0	0.0	12.0
16	0.0	25.0	70.0	3.0	0.0	40.0	0.0	0.0	4.0	36.0	0.0	13.0
17	45.0	0.0	54.0	0.0	0.0	22.0	0.0	0.0	0.0	22.0	0.0	0.0
18	27.0	1.0	7.0	18.0	5.0	73.0	0.0	0.0	0.0	1.0	0.0	0.0
19	54.0	12.0	34.0	11.0	27.0	13.0	0.0	4.0	4.0	22.0	0.0	0.0
20	8.0	3.0	0.0	3.0	14.0	0.0	0.0	0.0	0.0	0.0	0.0	0.0
21	29.0	0.0	6.0	0.0	17.0	0.0	0.0	0.0	0.0	36.0	0.0	12.0
22	4.0	0.0	12.0	0.0	0.0	0.0	0.0	0.0	0.0	0.0	0.0	45.0
23	0.0	4.0	27.0	0.0	0.0	5.0	0.0	0.0	22.0	22.0	0.0	35.0
24	0.0	0.0	19.0	4.0	62.0	5.0	0.0	0.0	0.0	40.0	0.0	15.0
25	6.0	0.0	36.0	0.0	0.0	8.0	0.0	0.0	0.0	22.0	0.0	17.0
26	26.0	46.0	0.0	0.0	17.0	87.0	0.0	0.0	0.0	24.0	0.0	21.0
27	6.0	0.0	47.0	0.0	0.0	0.0	0.0	0.0	0.0	0.0	0.0	2.0
28	18.0	0.0	0.0	2.0	0.0	0.0	0.0	0.0	2.0	0.0	0.0	5.0
29	0.0		0.0	5.0	0.0	0.0	0.0	2.0	0.0	5.0	0.0	0.0
30	3.0		97.0	0.0	0.0	0.0	0.0	15.0	34.0	0.0	23.0	0.0
31	23.0		6.0		9.0		0.0	5.0		0.0		0.0
Hujan Maks	131.0	65.0	192.0	18.0	70.0	87.0	86.0	62.0	141.0	115.0	23.0	64.0
Jml. Curah Hujan	501.0	229.0	849.0	107.0	436.0	402.0	123.0	243.0	255.0	684.0	23.0	450.0
Jml. Hari Hujan	21	13	26	14	18	16	4	11	13	23	1	22
Jml. data (1-15)	15	15	15	15	15	15	15	15	15	15	15	15
Jml. Hujan (1-15)	252.0	138.0	434.0	61.0	285.0	149.0	123.0	217.0	189.0	454.0	0.0	285.0
Jml. Data (16-31)	16	13	16	15	16	15	16	16	15	16	15	16
Jml. Hujan (16-31)	249.0	91.0	415.0	46.0	151.0	253.0	0.0	26.0	66.0	230.0	23.0	165.0
Tahunan	Hujan Maksimum			Jumlah Curah Hujan			Jumlah Hari Hujan			Hujan Ekstrim		
	192.0			4302.0			182			304		

GRAFIK HUJAN (mm)

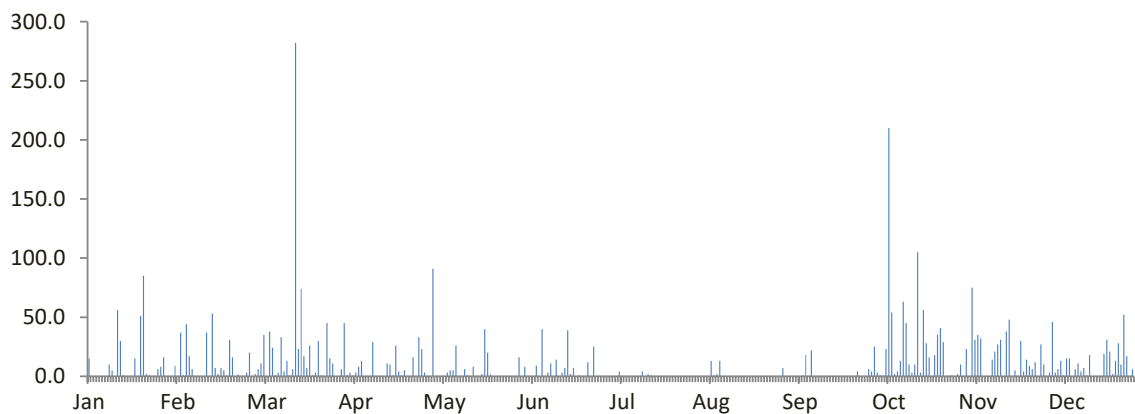


DATA CURAH HUJAN HARIAN

Nama Pos : Merden	Provinsi : Jawa tengah
Nomor Pos : K 30 a	Kota/Kabupaten : Kebumen
Jenis Alat : Manual	Kecamatan : Padureso
Koordinat : 7 39' 21.27" LS-109 48' 10.76" BT	Desa/Kampung : Merden
Elevasi : + 12.5 m	Pengelola : BPSDA Probolo
SWS - DAS : Wawar	Didirikan : Siti Rochanah
Tahun Pendirian : 1990	Tahun : 2022

TANGGAL	BULAN (mm)											
	Jan	Feb	Mar	Apr	Mei	Jun	Jul	Ags	Sep	Okt	Nov	Des
1	15.0	0.0	6.0	1.0	91.0	0.0	0.0	0.0	0.0	4.0	10.0	0.0
2	0.0	37.0	11.0	3.0	0.0	8.0	0.0	0.0	0.0	25.0	0.0	3.0
3	0.0	1.0	35.0	1.0	0.0	0.0	0.0	0.0	0.0	3.0	23.0	46.0
4	0.0	44.0	0.0	3.0	0.0	0.0	0.0	0.0	0.0	1.0	0.0	3.0
5	0.0	17.0	38.0	8.0	0.0	0.0	4.0	0.0	0.0	1.0	75.0	6.0
6	0.0	6.0	24.0	13.0	3.0	9.0	0.0	13.0	0.0	23.0	31.0	13.0
7	0.0	0.0	1.0	0.0	5.0	0.0	0.0	1.0	1.0	210.0	35.0	1.0
8	10.0	0.0	3.0	0.0	5.0	40.0	0.0	2.0	18.0	54.0	32.0	15.0
9	5.0	0.0	33.0	0.0	26.0	0.0	0.0	13.0	0.0	2.0	0.0	15.0
10	0.0	0.0	4.0	29.0	0.0	3.0	0.0	0.0	22.0	4.0	0.0	0.0
11	56.0	37.0	13.0	0.0	0.0	11.0	0.0	0.0	0.0	13.0	0.0	6.0
12	30.0	0.0	1.0	0.0	6.0	0.0	0.0	0.0	0.0	63.0	14.0	11.0
13	1.0	53.0	6.0	0.0	1.0	14.0	4.0	0.0	0.0	45.0	21.0	4.0
14	0.0	7.0	282.0	0.0	0.0	0.0	0.0	0.0	0.0	10.0	27.0	7.0
15	0.0	2.0	23.0	11.0	8.0	3.0	2.0	0.0	0.0	3.0	31.0	1.0
16	0.0	7.0	74.0	10.0	0.0	7.0	1.0	0.0	0.0	10.0	0.0	18.0
17	15.0	5.0	17.0	1.0	0.0	39.0	0.0	0.0	0.0	105.0	38.0	0.0
18	0.0	1.0	7.0	26.0	2.0	2.0	0.0	0.0	0.0	3.0	48.0	0.0
19	51.0	31.0	26.0	4.0	40.0	7.0	0.0	0.0	0.0	56.0	0.0	0.0
20	85.0	16.0	1.0	1.0	20.0	0.0	0.0	0.0	0.0	28.0	5.0	0.0
21	2.0	0.0	3.0	5.0	2.0	1.0	0.0	0.0	0.0	16.0	0.0	19.0
22	1.0	2.0	30.0	0.0	0.0	0.0	0.0	0.0	0.0	0.0	30.0	31.0
23	0.0	0.0	1.0	0.0	0.0	0.0	0.0	0.0	0.0	18.0	4.0	21.0
24	0.0	0.0	0.0	16.0	0.0	12.0	0.0	0.0	0.0	35.0	14.0	2.0
25	6.0	3.0	45.0	0.0	0.0	0.0	0.0	0.0	0.0	41.0	9.0	13.0
26	8.0	20.0	15.0	33.0	0.0	25.0	0.0	0.0	4.0	29.0	6.0	28.0
27	16.0	0.0	11.0	23.0	0.0	0.0	0.0	0.0	0.0	0.0	12.0	10.0
28	0.0	2.0	0.0	3.0	0.0	0.0	0.0	0.0	0.0	0.0	0.0	52.0
29	0.0		0.0	0.0	0.0	0.0	0.0	0.0	0.0	1.0	27.0	17.0
30	0.0		6.0	0.0	0.0	0.0	0.0	0.0	6.0	0.0	10.0	0.0
31	9.0		45.0		16.0		0.0	7.0		2.0		6.0
Hujan Maks	85.0	53.0	282.0	33.0	91.0	40.0	4.0	13.0	22.0	210.0	75.0	52.0
Jml. Curah Hujan	310.0	291.0	761.0	191.0	225.0	181.0	11.0	36.0	51.0	805.0	502.0	348.0
Jml. Hari Hujan	15	18	27	18	13	14	4	5	5	27	21	24
Jml. data (1-15)	15	15	15	15	15	15	15	15	15	15	15	15
Jml. Hujan (1-15)	117.0	204.0	480.0	69.0	145.0	88.0	10.0	29.0	41.0	461.0	299.0	131.0
Jml. Data (16-31)	16	13	16	15	16	15	16	16	15	16	15	16
Jml. Hujan (16-31)	193.0	87.0	281.0	122.0	80.0	93.0	1.0	7.0	10.0	344.0	203.0	217.0
Tahunan	Hujan Maksimum			Jumlah Curah Hujan			Jumlah Hari Hujan			Hujan Ekstrim		
	282.0			3712.0			191			282		

GRAFIK HUJAN (mm)

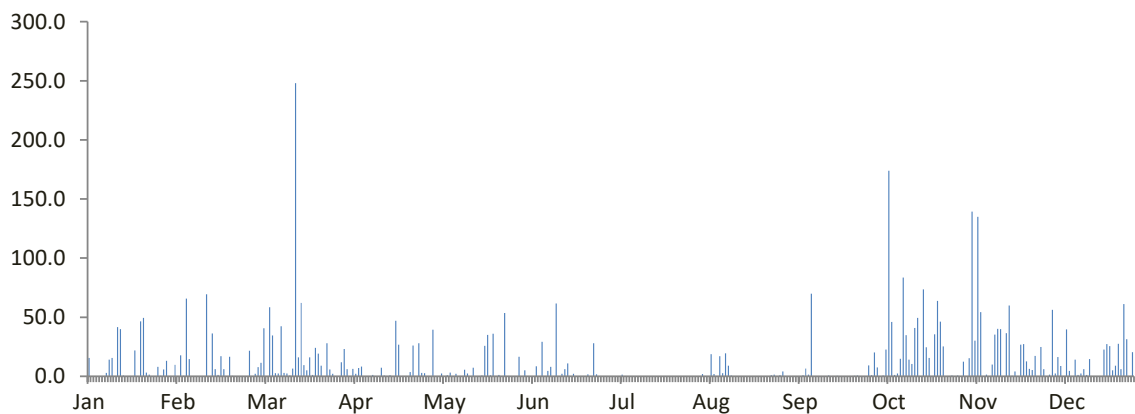


DATA CURAH HUJAN HARIAN

Nama Pos : Pejengkolan	Provinsi : Jawa tengah
Nomor Pos : -	Kota/Kabupaten : Kebumen
Jenis Alat : Manual dan Otomatis	Kecamatan : Padureso
Koordinat : 7 39' 30.30" LS-109 46' 22.00" BT	Desa/Kampung : Pajengkolan
Elevasi : -	Pengelola : BPSDA Probolo
SWS - DAS : Wawar	Didirikan : Eni Erliasih
Tahun Pendirian : 1999	Tahun : 2022

TANGGAL	BULAN (mm)											
	Jan	Feb	Mar	Apr	Mei	Jun	Jul	Ags	Sep	Okt	Nov	Des
1	15.5	0.0	7.8	6.0	39.5	0.0	0.0	0.0	0.0	1.0	0.0	0.0
2	0.0	17.7	11.5	0.0	0.0	5.0	0.0	0.0	0.0	20.1	12.5	1.5
3	0.0	0.4	40.7	6.2	0.1	0.0	0.0	2.0	0.0	7.5	0.3	56.3
4	0.0	65.7	0.0	2.1	2.5	0.0	0.0	0.0	0.0	0.0	15.4	2.3
5	0.0	14.5	58.5	7.0	0.0	0.0	0.0	0.0	0.0	0.8	139.3	16.2
6	0.0	0.0	34.5	8.2	1.0	8.6	1.5	18.8	0.0	22.6	30.2	8.8
7	2.8	0.0	2.7	0.0	3.0	0.0	0.0	1.9	0.9	174.0	135.0	0.0
8	14.0	0.0	2.5	0.0	0.0	29.2	0.0	0.0	6.5	46.0	54.3	39.6
9	15.6	0.0	42.4	0.0	2.1	0.0	0.0	17.1	1.5	1.2	0.0	4.5
10	0.0	0.2	2.8	1.1	0.0	4.5	0.0	2.7	69.9	2.5	1.5	0.0
11	41.5	69.5	2.5	0.0	0.0	8.1	0.0	19.5	0.0	14.8	0.0	14.0
12	40.0	0.3	0.8	0.0	5.5	0.0	0.0	9.0	0.0	83.6	9.9	1.1
13	0.7	36.2	6.5	7.2	2.3	61.5	0.0	0.8	0.0	34.9	35.3	2.3
14	0.0	6.1	248.0	0.7	0.0	0.3	0.0	0.0	0.0	14.0	40.1	6.0
15	0.0	1.2	16.0	0.0	7.3	2.2	0.0	0.0	0.0	10.5	40.0	1.2
16	0.0	17.0	62.0	1.0	0.0	6.0	0.0	0.0	0.6	40.8	0.0	14.6
17	22.0	6.0	9.5	0.0	0.0	11.0	0.0	0.0	0.0	49.5	36.5	0.0
18	0.0	0.3	5.0	47.0	0.8	0.0	0.0	0.0	0.0	0.0	59.8	0.0
19	46.5	16.6	16.0	26.8	25.8	2.2	0.0	0.0	0.5	73.5	0.5	0.0
20	49.5	0.5	1.2	0.3	35.0	0.0	0.0	0.0	0.0	24.6	4.0	0.0
21	3.0	0.0	24.0	0.3	0.9	0.0	0.0	0.0	0.0	15.5	0.0	22.5
22	1.5	0.0	19.3	0.0	36.0	0.0	0.0	0.0	0.0	0.0	26.8	27.2
23	0.0	0.0	9.0	3.5	0.0	0.0	0.0	0.0	0.0	35.4	27.3	25.5
24	0.0	0.0	0.0	26.0	1.2	1.7	0.0	0.0	0.0	63.8	12.7	5.0
25	8.0	0.0	28.0	0.0	0.0	0.0	0.0	0.0	0.4	46.3	6.3	8.9
26	0.4	21.6	5.9	28.0	53.5	28.0	0.0	0.0	0.8	25.3	5.4	27.4
27	5.7	0.0	2.1	2.8	0.0	1.6	0.0	1.0	0.0	0.0	17.2	6.0
28	13.0	2.2	0.0	2.6	0.0	0.0	0.0	1.5	0.0	0.0	0.0	61.2
29	0.0		0.0	0.0	0.0	0.0	0.0	0.0	0.0	0.8	24.7	31.4
30	0.0		11.9	0.0	0.0	0.0	0.0	1.0	9.1	0.0	6.1	0.0
31	9.7		23.0		16.6		0.0	4.1		0.8		20.3
Hujan Maks	49.5	69.5	248.0	47.0	53.5	61.5	1.5	19.5	69.9	174.0	139.3	61.2
Jml. Curah Hujan	289.4	276.0	694.1	176.8	233.1	169.9	1.5	79.4	90.2	809.8	741.1	403.8
Jml. Hari Hujan	17	17	27	18	17	14	1	12	9	25	24	23
Jml. data (1-15)	15	15	15	15	15	15	15	15	15	15	15	15
Jml. Hujan (1-15)	130.1	211.8	477.2	38.5	63.3	119.4	1.5	71.8	78.8	433.5	513.8	153.8
Jml. Data (16-31)	16	13	16	15	16	15	16	16	15	16	15	16
Jml. Hujan (16-31)	159.3	64.2	216.9	138.3	169.8	50.5	0.0	7.6	11.4	376.3	227.3	250.0
Tahunan	Hujan Maksimum			Jumlah Curah Hujan			Jumlah Hari Hujan			Hujan Ekstrim		
	248.0			3965.1			204			248		

GRAFIK HUJAN (mm)



DATA CURAH HUJAN HARIAN

Nama Pos	: Penimbun-Embun Kalong	Provinsi	: Jawa Tengah
Nomor Pos	: -	Kota/Kabupaten	: Kebumen
Jenis Alat	: Manual	Kecamatan	: Karanggayam
Koordinat	: 7 33' 45.28" LS-109 34' 02.93" BT	Desa/Kampung	: Penimbun
Elevasi	: -	Pengelola	: BPSDA Probolo
SWS - DAS	: Telomoyo	Didirikan	: Tugiyati
Tahun Pendirian	: 2015	Tahun	: 2022

TANGGAL	BULAN (mm)											
	Jan	Feb	Mar	Apr	Mei	Jun	Jul	Ags	Sep	Okt	Nov	Des
1	48.9	0.0	13.0	0.0	16.1	0.0	0.0	0.0	1.0	46.0	35.1	1.2
2	0.0	0.0	6.0	16.9	3.9	21.1	0.0	0.0	0.0	67.3	0.0	17.2
3	0.0	4.1	16.6	2.4	0.0	0.0	6.8	0.0	0.0	47.1	6.1	12.2
4	0.0	26.8	0.0	0.0	11.3	8.1	0.0	0.0	0.0	8.2	3.4	8.3
5	0.0	6.7	60.1	10.5	0.0	3.1	0.0	0.0	0.0	0.0	41.2	51.0
6	0.0	0.0	32.6	0.0	10.6	6.2	0.0	36.2	0.0	4.3	12.1	40.3
7	3.9	0.0	6.0	0.0	18.4	0.0	0.0	6.1	8.2	133.2	40.2	0.0
8	17.4	0.0	22.0	0.0	0.0	1.3	0.0	0.0	10.3	35.9	4.4	37.1
9	19.0	0.0	7.9	0.0	10.1	0.0	0.0	11.0	3.1	16.4	55.4	6.1
10	0.0	0.0	0.0	0.0	0.0	20.0	0.0	55.2	90.3	7.3	5.4	0.0
11	84.4	12.8	14.9	0.0	2.8	53.2	0.0	8.2	5.1	6.2	26.3	14.3
12	20.0	0.0	17.2	0.0	5.3	0.0	2.1	45.4	1.3	111.3	10.1	1.2
13	0.0	42.4	36.0	0.0	10.2	16.1	100.2	34.4	0.0	13.1	11.3	16.3
14	0.0	6.1	234.2	0.0	12.4	0.0	0.0	3.3	0.0	21.3	30.1	38.0
15	0.0	0.0	13.0	0.0	0.0	13.1	14.1	0.0	0.0	13.0	37.0	25.1
16	0.0	9.8	14.6	8.2	0.0	51.0	2.4	6.9	0.0	47.0	0.0	5.2
17	17.6	28.4	70.1	16.2	0.0	0.0	0.0	0.0	0.0	25.7	9.4	0.0
18	16.0	0.0	0.0	8.1	5.9	29.0	0.0	0.0	0.0	5.2	18.3	0.0
19	56.7	12.0	32.4	0.0	63.0	24.0	0.0	1.0	9.1	46.2	2.2	0.0
20	9.1	0.0	0.0	0.0	14.9	0.0	0.0	0.0	2.4	0.0	3.4	0.0
21	9.4	0.0	3.7	0.0	1.0	0.0	0.0	0.0	1.3	24.1	0.0	9.3
22	0.0	2.2	0.0	0.0	0.0	0.0	0.0	0.0	0.0	0.0	2.0	37.3
23	0.0	0.0	34.4	0.0	0.0	11.2	0.0	0.0	6.2	36.0	7.2	33.1
24	0.0	0.0	0.0	0.0	27.4	2.1	0.0	0.0	0.0	56.6	60.2	17.2
25	13.9	6.7	28.7	0.0	0.0	12.1	0.0	0.0	1.3	22.3	3.4	28.0
26	5.4	54.2	0.0	4.6	12.9	40.2	0.0	0.0	1.2	3.2	33.3	18.3
27	3.6	0.0	17.5	0.0	0.0	0.0	0.0	2.3	0.0	0.0	0.0	2.1
28	10.0	0.0	0.0	0.0	0.0	0.0	0.0	0.0	0.0	0.0	0.0	2.0
29	0.0		35.2	2.9	0.0	0.0	0.0	0.0	0.0	0.0	12.1	0.0
30	0.0		30.5	0.0	0.0	0.0	0.0	1.0	52.1	0.0	14.2	0.0
31	0.0		5.1		5.7		0.0	4.8		0.0		0.0
Hujan Maks	84.4	54.2	234.2	16.9	63.0	53.2	100.2	55.2	90.3	133.2	60.2	51.0
Jml. Curah Hujan	335.3	212.2	751.7	69.8	231.9	311.8	125.6	215.8	192.9	796.9	483.8	420.8
Jml. Hari Hujan	15	12	23	8	17	16	5	13	14	23	25	22
Jml. data (1-15)	15	15	15	15	15	15	15	15	15	15	15	15
Jml. Hujan (1-15)	193.6	98.9	479.5	29.8	101.1	142.2	123.2	199.8	119.3	530.6	318.1	268.3
Jml. Data (16-31)	16	13	16	15	16	15	16	16	15	16	15	16
Jml. Hujan (16-31)	141.7	113.3	272.2	40.0	130.8	169.6	2.4	16.0	73.6	266.3	165.7	152.5
Tahunan	Hujan Maksimum			Jumlah Curah Hujan			Jumlah Hari Hujan			Hujan Ekstrim		
	234.2			4148.5			193			234.2		

GRAFIK HUJAN (mm)

